



Slim Line Series Security Grilles

STYLE, PRACTICALITY AND SECURITY: YOU CAN HAVE IT ALL



DYNAMIC
CLOSURES

INNOVATIVE DESIGN. INTELLIGENTLY SIMPLE.

BENEFITS OF THE SLIM LINE

Contemporary Look Free of Horizontal Lines

- No distracting horizontal supports in doors up to 14' tall.
- Ideal for custom installations with curved or L-shaped pockets.
- Polycarbonate, solid aluminum, or perforated aluminum panels.
- Clear and black anodized finishes are standard; more available.

Space Saving Design - More Room For Display

- 5" wide stack is 37.5% smaller than standard 8" stacks.

Advanced Eco-Friendly Materials

- Lighter, stronger materials are made with fewer resources.

Makes Retrofit Headaches Vanish

- Easily fits within existing pockets.
- Also fits between standard 6-inch wall studs.

ADA Compliant Options

- Locks and hardware that can be operated by wheelchair users.

Complies With Local Fire Codes

- Emergency egress "door within a door".

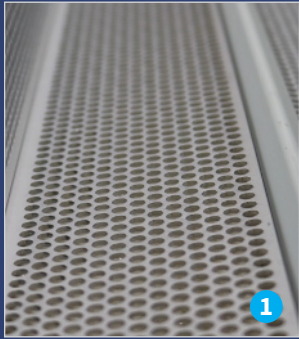
Our Experts Make Designing Easier and Faster

- Expert answers and ideas.
- Pre-made CAD elements for your final plans.

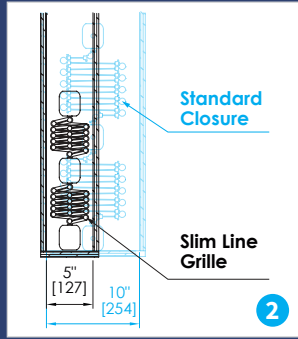
Learn More at DynamicClosures.com



FEATURES & OPTIONS



1



2



3



4



5



6



7



8



9



1. Patented 1-Piece Continuous Hinge

- Eliminates the unsightly “black soot” hinge stains.
- See individual models for availability.

2. Slimmer 5" Wide Pocket

- Saves space—also perfect for retrofits.
- Fits easily between commercial studs.

3. Custom Curves With Industry-Leading Turnaround

- Choose from standard curves or create your own.
- We bend curves in-house to deliver your doors faster and maximum quality.

4. User-Friendly Locking Posts

- Accommodates right hand and left hand grips.
- Easy for people of different heights.
- Flush-mounted hardware for sleek look and elimination of snag points.
- Unique shape gives unbelievable strength and also makes posts easy to service.

5. Emergency Egress Door

- “Door within a door” is available to meet fire code regulations.

6. Dust Proof Floor Sockets

- Spring-loaded protective cap keeps dust out of floor sockets.
- Sockets for food counters meet the strictest health code regulations.

7. Easy to Change Locks

- 1" mortise cylinder locks can be easily changed by your security team.
- Optional SFIC housing and cores available.

8. New 2017 – Optional Maglock

- Can use card readers and keypads.
- See individual post types for availability.

9. Materials Options

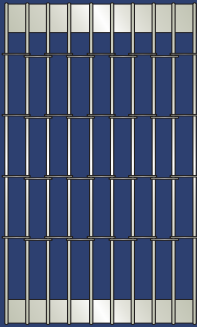
- Aluminum rod and link, perforated aluminum, polycarbonate panels, or solid aluminum.

10. Colour Options

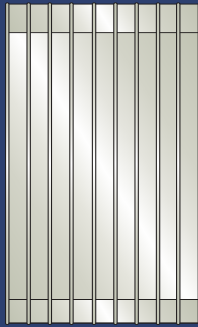
- In stock: clear anodized or black anodized.
- Bronze, Light bronze, or champagne anodized also available with notice.

Learn More at DynamicClosures.com

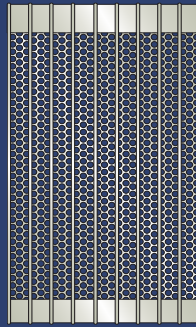
SLIM LINE SERIES MODELS (CSI Division: 08 35 16)



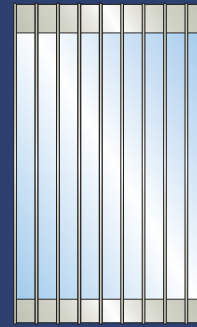
SL 154



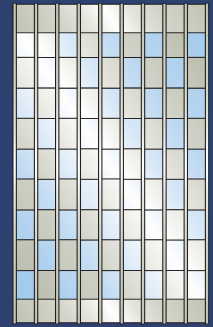
SL Opaque



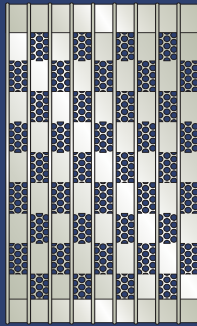
SL Paravent



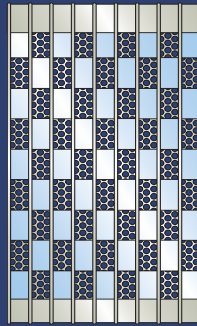
SL Prestige



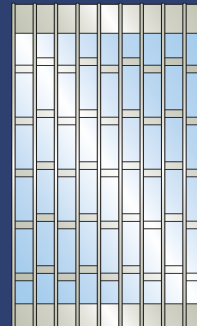
SL AG CS



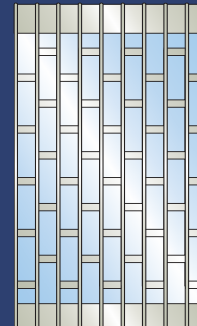
SL AG PS



SL AG PC



SL 12 CS



SL 525 CS

Material	SL 154	SL Opaque	SL Paravent	SL Prestige	SL AG CS	SL AG PS	SL AG PC	SL 12 CS	SL 525 CS
4" wide aluminum rod and link	•								
4" wide solid aluminum panels		•							
Perforated aluminum interlocked in 4" wide interlocking panels			•						
Polycarbonate panels interlocked in 4" wide aluminum frame				•					
4" wide panel with interlocked alternating polycarbonate panels and solid aluminum panels in a checkerboard design					•				
4" wide panel with interlocked alternating perforated aluminum panels and solid aluminum panels in a checkerboard design						•			
4" wide panel with interlocked alternating polycarbonate panels and perforated aluminum panels in a checkerboard design							•		
4" wide panel with interlocked 12" polycarbonate panels and 2" solid aluminum panels in a brick design								•	•
6", 9" 12", 18" patterns available					•	•	•		
Hinge									
2" top and bottom truss-like aluminum panels	•								
1 piece continuous aluminum		•	•	•	•	•	•	•	•
Weight/Load									
5.00 lbs per ft ² (stacked) and 1.00 lbs per ft ² (extended)	•								
10.00 lbs per ft ² (stacked) and 1.60 lbs per ft ² (extended)				•					
11.50 lbs per ft ² (stacked) and 1.80 lbs per ft ² (extended)			•					•	•
13.50 lbs per ft ² (stacked) and 2.00 lbs per ft ² (extended)					•	•	•		
15.00 lbs per ft ² (stacked) and 2.20 lbs per ft ² (extended)		•							
Pocket Width Opening - 5" minimum	•	•	•	•	•	•	•	•	•
Max Height - 14'0", and higher with review	•	•	•	•	•	•	•	•	•
Max Width - Unlimited	•	•	•	•	•	•	•	•	•