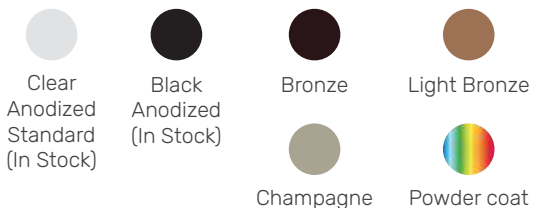


### Product Data

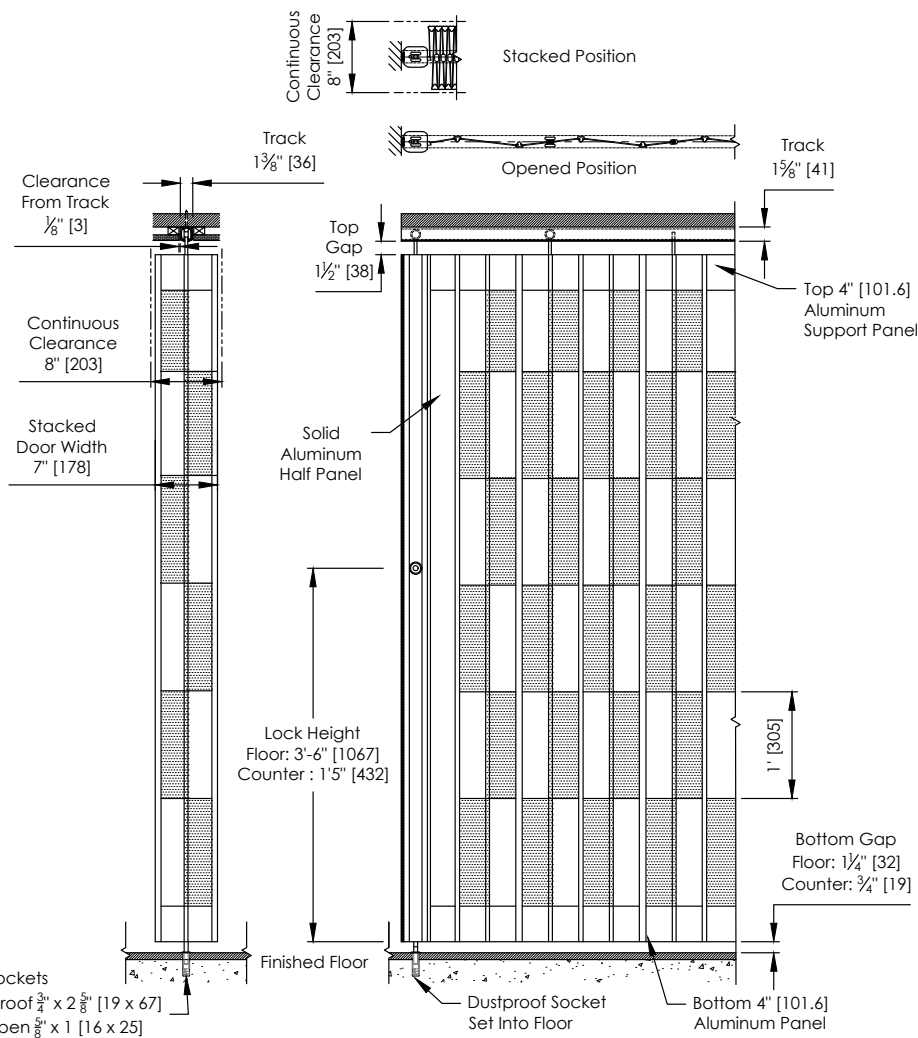
Max Width	Unlimited	
Max Height	168"	[4267]
Panel Width	7"	[177]
Min Pocket Width	8"	[203]
Weight Stacked	15.8lbs/ft <sup>2</sup>	77kg/m <sup>2</sup>
Weight Extended	1.45lbs/ft <sup>2</sup>	7kg/m <sup>2</sup>

### Color Options



### Curve Data

	Radius 10" [254]	Radius 14" [356]
90 Degree	—	•
120 Degree	•	—
135 Degree	•	—
150 Degree	•	—
Custom Curves	Available, please consult factory	



### Curtain Dimensions

Panel Count	Width		Stack	
	in.	mm.	in.	mm.
2	13.96	355	1.12	28
3	20.77	528	1.69	43
4	27.58	701	2.25	57
5	34.39	874	2.82	72
6	41.21	1047	3.39	86
7	48.02	1220	3.96	101
8	54.83	1393	4.52	115
9	61.64	1566	5.09	129
10	68.45	1739	5.66	144

Panel Count	Width		Stack	
	in.	mm.	in.	mm.
11*	75.26	1912	6.23	158
12	82.07	2085	6.79	172
13	88.88	2258	7.36	187
14	95.69	2431	7.93	201
15	102.5	2604	8.5	216
16	109.32	2777	9.06	230
17	116.13	2950	9.63	245
18	122.94	3123	10.2	259

\* Maximum Span on Counter Application

## Post Data



	Post 1	Post 2	Post 3	Post 3	Post 5	Post 7	Post 9	Post 10
Dimension	Wall Channel	Hookbolt Lead	Bi-Part Channel	Bi-Part Hookbolt	Intermediate	Top and Bottom	Trailing	Fixed
Width to Door Length	0.75" [19]	2.75" [70]	1" [25]	2.75" [70]	2.75" [70]	3" [76]	1.5" [38]	0.75" [19]
Width to Stack Depth	0.75" [19]	2.75" [70]	1" [25]	2.75" [70]	2.75" [70]	3" [76]	1.5" [38]	0.75" [19]
Min Height	2" [51]	21.25" [540]	21.25" [540]	21.25" [540]	21.625" [549]	32.125" [816]	21.25" [540]	21.25" [540]
Max Height	168" [4267]	168" [4267]	168" [4267]	168" [4267]	168" [4267]	168" [4267]	168" [4267]	168" [4267]
Top Lock Rod Travel	-	-	-	-	-	-	-	-
Bottom Lock Rod Min Travel	-	-	-	0.5" [13]	0.5" [13]	0.5" [13]	-	-
Bottom Lock Rod Max Travel Floor	-	-	-	3.5" [89]	3.5" [89]	3.5" [89]	-	-
Bottom Lock Rod Max Travel Counter	-	-	-	2.5" [64]	2.5" [64]	2.5" [64]	-	-
Lock Height Floor Application	-	47" [1194]	47" [1194]	47" [1194]	47" [1194]	47" [1194]	-	-
Lock Height Counter Application	-	17" [432]	17" [432]	17" [432]	17" [432]	17" [432]	-	-
<b>Features</b>								
Adjustable Top Hanger	-	•	•	•	•	•	•	•
Universal LH and RH	•	•	•	•	•	•	•	•
Flush Mounted Lock Rod Operation	-	-	-	•	•	•	-	-
Pull Strap	-	Std over 108" [2743]	Std over 108" [2743]	-	-	Std over 108" [2743]	-	-
Plastic Flange 7" [178] (Max 120" [3048])	-	-	-	-	-	•	Std With EL	-
Plastic Flange 4.5" [114] (Max 120" [3048])	-	-	-	-	-	•	Std With SL	-
<b>Locking Options</b>								
Cylinder/Thumb Turn	-	•	•	-	•	•	-	-
ADA Turn Knob	-	•	•	-	-	•	-	-
Locking 1 Side	-	•	•	-	•	•	-	-
Locking 2 Sides	-	•	•	-	-	•	-	-

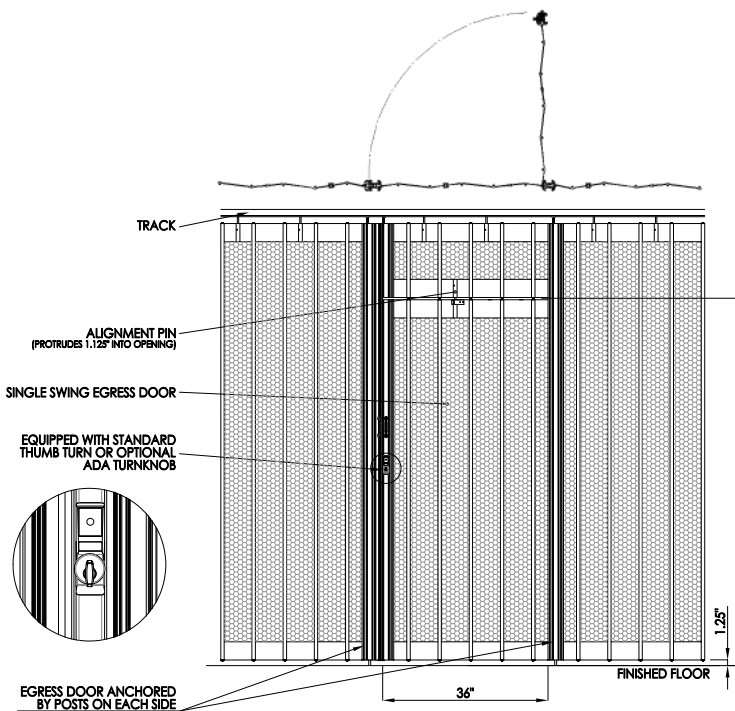
## Egress Data

Clear Opening Width (Egress Door)	36" [914]
Clear Opening Height (Egress Door)	80.75" [2051]
Min Opening Height Required	89.375" [2270]
Hand of Operation	LH/RH
Total Length (includes Bi-Part Post)	38" [965]
Stack Required (includes Bi-Part Post)	6" [162]

## Locking Options

Description	ADA Turnknob	LFIC	SFIC	StdMortise	Thumbturn
Front view					
Side view					

## Egress Left Hand Reverse



## Egress Right Hand Reverse

