

# Tambour Shutter

The Tambour shutter is made for keeping your merchandise safe. Easily moved to your current keying system, with no counterbalance weight required. This shutter is perfect for commercial display cabinets, pharmacy counters, and anywhere a small opening needs maximum security.

## Small Openings and Display Cases, Protected.

### Tambour



CTS-M

#### Features:

- ✓ No need for a barrel and counterbalance
- ✓ Standard Mortice Cylinder Locks
- ✓ Clear Anodized Finish

#### Options

- ✓ Interchangeable Cores- Small/Large Format Interchangeable Cores,
- ✓ Hookbolt locking with Recessed Cabinet Lock
- ✓ Shootbolt locking
- ✓ Custom Anodized - Black, Bronze, Light Bronze, Champagne Anodized
- ✓ Custom RAL - RAL Powder Coat Finish



Tambour CTS-M

**Tambour shutters or doors are perfect for providing extra security for cabinets in pharmacies, mall kiosks, AV and other transportation and display cases. They're easy to open, close and lock.**

# Features And Options

## Cylinders

- ✓ Variety of factory installed cylinders available
- ✓ Field swappable.
  - o Standard Mortise Cylinder (Yale Keyways)
  - o Small Format Interchangeable Core (SFIC)
  - o Large Format Interchangeable Core (LFIC Schlage Core)
  - o Manually Operated Thumb Turn



## Locking

- ✓ Throw Bolts Both Sides
  - o Spring loaded Throw Bolts engage cabinet on both sides. An Astragal extends full length of bottom bar.
- ✓ Hook Bolt with Recessed Cabinet Lock
  - o A cleaner appearance is achieved by allowing Hook Bolt to lock into a recessed locking plate in the cabinet.



## Radius

- ✓ Groove radius can be as little as 2in [51]

## No Bulky Roll

No need for a barrel and counterbalance with this type of cabinet door, which makes it easy to install on commercial display cabinets. The shutter is easy to open and close manually.



# Product Specifications



Series	Model	Description	Max Height	Max Width	Slat Height	Max Size
Tambour	CTS-M	Mini Solid Aluminum	60 [1524]	60 [1524]	0.875 [22]	20ft² [1.86m²]

### Worry-Free Security For Important Merchandise

The Tambour Shutter not only has a highly advanced cylinder lock, it offers a choice of two different locking mechanisms to ensure your goods stay safe from theft.

### Conveniently Adapts To Your Preferred Locking System

The Tambour comes with a full-size mortise cylinder lock that is easy to change over to your key system. It's so easy to re-key that yearly key changes can become a regular part of your security protocol.

We can also install a housing for SFIC/LFIC (small/large format interchangeable core) locks on request.

### No Compromise On Design

There are three materials options and many finish options, so you can choose cabinet security to fit the look and feel of your store.



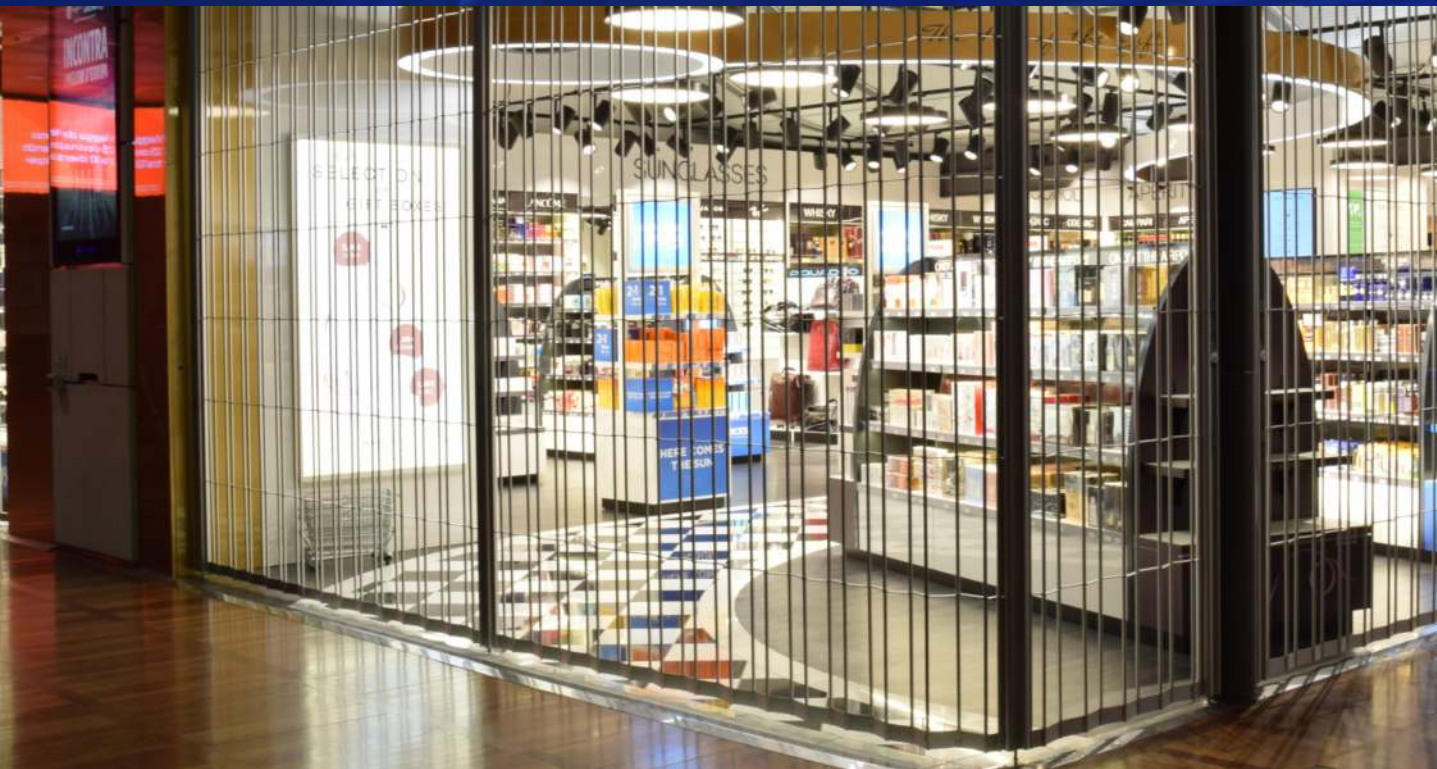
Tambour shutters or doors are perfect for providing extra security for cabinets in pharmacies, mall kiosks, AV and other transportation and display cases. They're easy to open, close and lock. The Tambour Shutter not only has a highly advanced cylinder lock, it offers a choice of three different locking mechanisms to ensure your goods stay safe from theft. The Tambour comes with a full-size mortise cylinder lock that is easy to change over to your key system. It's so easy to re-key that yearly key changes can become a regular part of your security protocol. We can also install a housing for SFIC (small format interchangeable core) locks on request.



The Mini solid aluminum and V-Slat solid aluminum are opaque for a cleaner look that also conveys security.

Any exposed aluminum tambour door is available in a choice of standard colors that play well with other design elements. A full spectrum of powder coat colors are available on request.





Call us at 1-800-663-4599

Monday to Friday, 8AM – 5PM Eastern.



## We're Open And Here To Help You!

From answering questions to creating custom CAD files for your project, we're here to save you time and money.

### Canada

**TELEPHONE**  
1-800-663-4599  
(613)-938-1222

**FAX**  
1-800-205-6665  
(613)-933-9189

**MAILING ADDRESS**  
P.O. Box 1296 Station Main  
Cornwall, Ontario  
K6H 5V4

### USA

**TELEPHONE**  
1-800-663-4599  
(613) 938-1222

**FAX**  
1-800-205-6665  
(613) 933-9189

**MAILING ADDRESS**  
P.O. Box 627  
Massena, N.Y.  
13662-0627

### Australia

**TELEPHONE**  
(03) 9739 5222

**FAX**  
(03) 9739 5599

**MAILING ADDRESS**  
58 Industrial Park Drive  
Lilydale VIC 3140

### Greater Toronto Area

**TELEPHONE**  
905-639-9472

**MAILING ADDRESS**  
4150 Morris Drive  
Burlington, Ontario  
L7L 5L6

[www.dynamicclosures.com](http://www.dynamicclosures.com)



INNOVATIVE DESIGN. INTELLIGENTLY SIMPLE.