

Side Folding Door Quick Specifications

Max Height	Max Width	Panel Width	Min Pocket Width	Weight Stacked	Weight Extended
in. [mm]	in. [mm]	in. [mm]	in. [mm]	lbs per ft ² [KG per m ²]	lbs per ft ² [KG per m ²]
168 [4267.2]	Unlimited	6 [153]	8 [204]	5.5 [26.8]	1 [4]

Choice Of Quality Anodized Finish On All Exposed Aluminum Parts.
 Note: Colors May Not Be Exactly As Shown.
 Cut And Sheared Edges Will Be Bare Aluminum.

Track – The Durable Hardened Track Allows For Smooth Operation.
 Optional Curves And Custom Curves Available.

Stock Anodized Finish



Clear

Optional Anodized Finishes



Champagne



Light Bronze

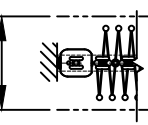


Bronze



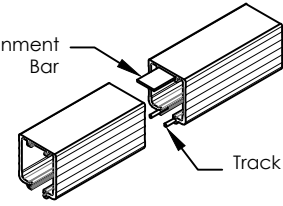
Black

Continuous Clearance 8" [203]

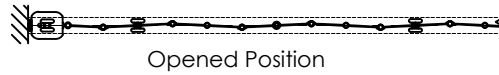


Stacked Position

Alignment Bar

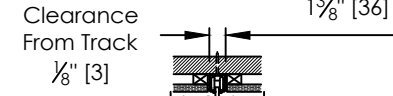


Track Pin



Opened Position

Track 1 5/8" [41]



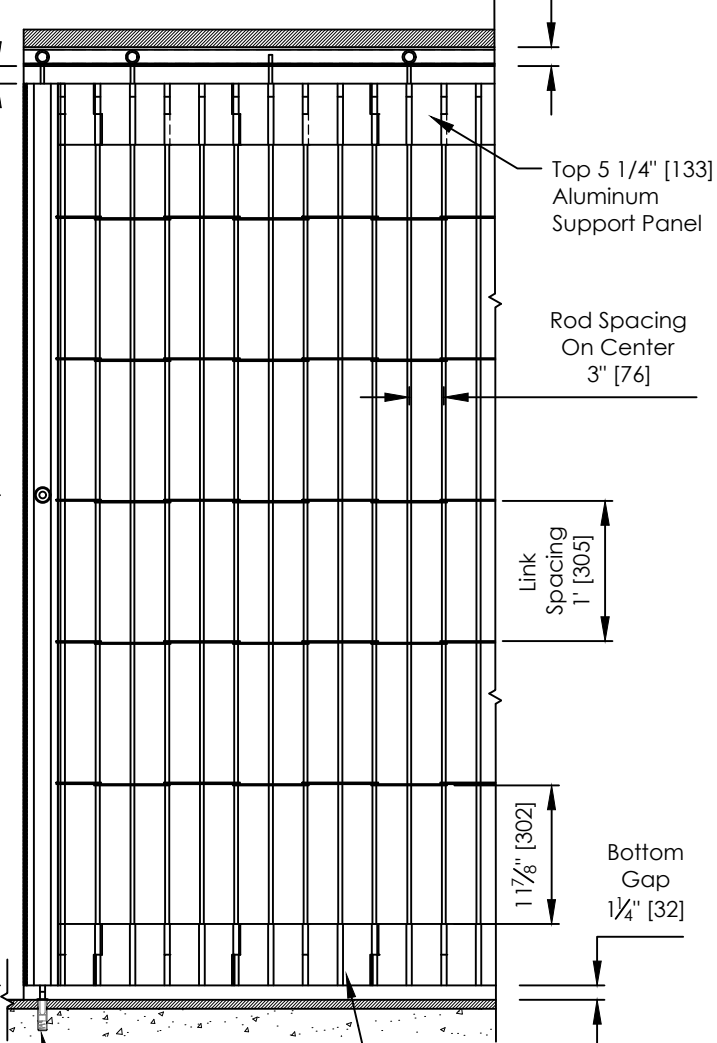
Clearance From Track 1/8" [3]

Track 1 3/8" [36]

Continuous Clearance 8" [203]

Stacked Door Width 6 1/2" [165]

Top Gap 1 1/2" [38]



Top 5 1/4" [133] Aluminum Support Panel

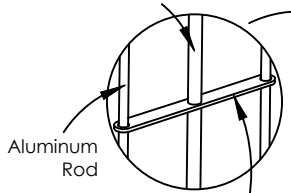
Rod Spacing On Center 3" [76]

Link Spacing 1" [305]

1 7/8" [302]

Bottom Gap 1/4" [32]

Aluminum Spacer Tube Covering Aluminum Rod



1/8" [3.17] Thick Aluminum Link

Cylinder Mill Height From Bottom Of Post 3'-6" [1067]

Finished Floor

Dustproof Socket Set Into Floor

Bottom 5 1/4" [133] Aluminum Panel

DIMENSIONS ARE IN INCHES STANDARD TOLERANCES APPLY UNLESS OTHERWISE INDICATED	DRAWN	INITIALS: -	DATE: -		
	REVISIONS				
	SYM.	DESCRIPTION	DATE	INITIALS	PART NO.
	-	-	-	-	-
PROPRIETARY AND CONFIDENTIAL THE INFORMATION CONTAINED IN THIS DRAWING IS THE SOLE PROPERTY OF DYNAMIC CLOSURES. ANY REPRODUCTION IN PART OR AS A WHOLE WITHOUT THE WRITTEN PERMISSION OF DYNAMIC CLOSURES IS PROHIBITED.	MATERIAL	COMMENTS:			DESCRIPTION
	FINISH	-			S-126 Straight Pattern (Full Height)
DO NOT SCALE DRAWING	-			SIZE A	SHEET 1 OF 1
SCALE: 1:16			WEIGHT:		