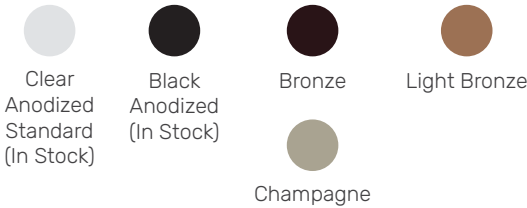


### Product Data

Max Width	Unlimited	
Max Height	144"	[3658]
Panel Width	4"	[101]
Min Pocket Width	5"	[127]
Weight Stacked	5lbs/ft <sup>2</sup>	24kg/m <sup>2</sup>
Weight Extended	1lbs/ft <sup>2</sup>	4kg/m <sup>2</sup>

### Color Options

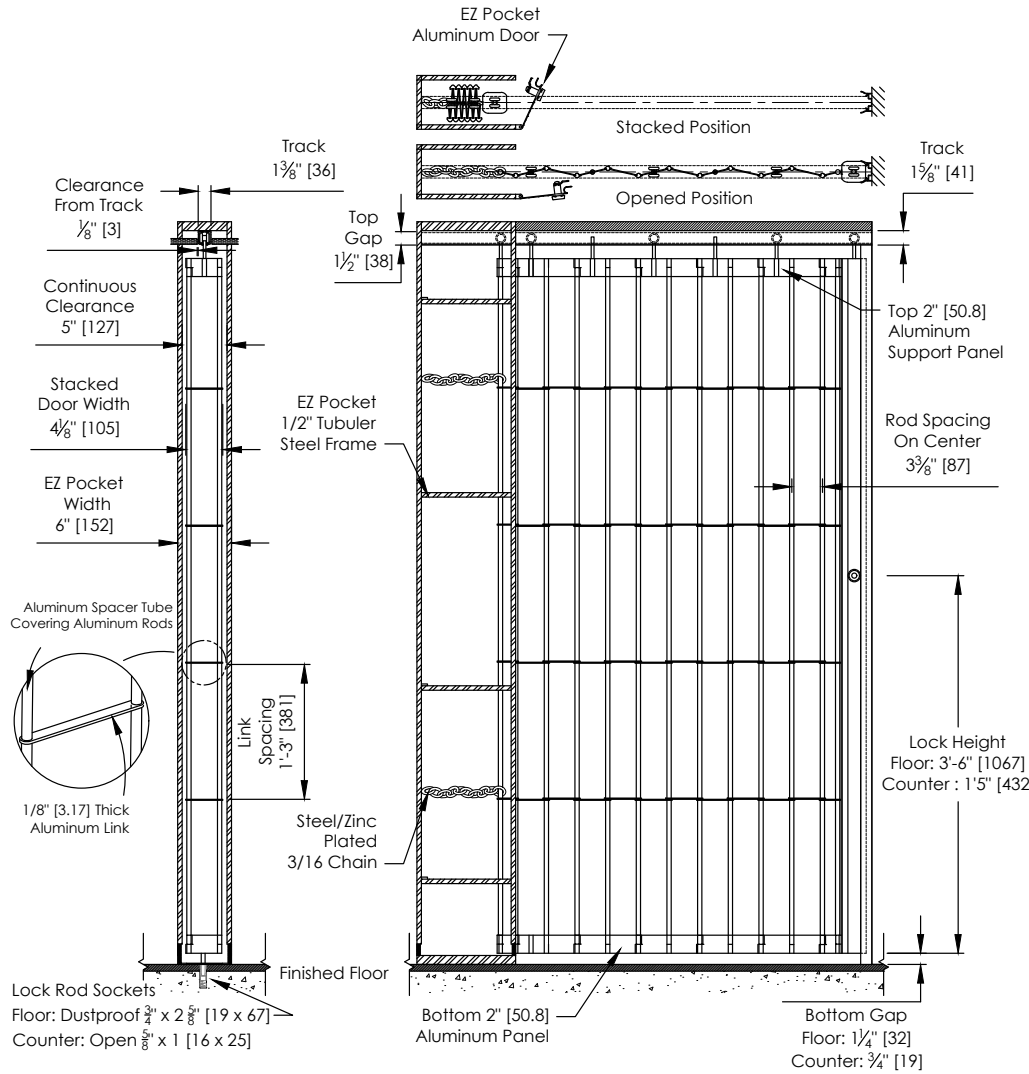


### Curtain Dimensions



### Curve Data

	Radius 10" [254]	Radius 14" [356]
90 Degree	—	•
120 Degree	•	—
135 Degree	•	—
150 Degree	•	—
Custom Curves	Available, please consult factory	



Panel Count	Width		Stack	
	in.	mm.	in.	mm.
2	7.71	196	2.23	57
3	11.12	282	2.58	66
4	14.53	369	2.92	74
5	17.94	456	3.27	83
6	21.35	542	3.62	92
7	24.77	629	3.97	101
8	28.18	716	4.32	110
9	31.59	802	4.67	119
10	35	889	5.02	128
11	38.41	976	5.37	136
12	41.83	1062	5.72	145
13	45.24	1149	6.07	154
14	48.65	1236	6.41	163
15	52.06	1322	6.76	172
16	55.47	1409	7.11	181
17	58.89	1496	7.46	189
18	62.3	1582	7.81	198

Panel Count	Width		Stack	
	in.	mm.	in.	mm.
19	65.71	1669	8.16	207
20	69.12	1756	8.51	216
21*	72.53	1842	8.86	225
22	75.95	1929	9.21	234
23	79.36	2016	9.56	243
24	82.77	2102	9.9	251
25	86.18	2189	10.25	260
26	89.59	2276	10.6	269
27	93.01	2362	10.95	278
28	96.42	2449	11.3	287
29	99.83	2536	11.65	296
30	103.24	2622	12	305
31	106.65	2709	12.35	314
32	110.07	2796	12.7	323
33	113.48	2882	13.05	331
34	116.89	2969	13.39	340
35	120.3	3056	13.74	349

\* Maximum Span on Counter Application

## Post Data



	Post 1	Post 2	Post 3	Post 3	Post 5	Post 7	Post 9	Post 10
Dimension	Wall Channel	Hookbolt Lead	Bi-Part Channel	Bi-Part Hookbolt	Intermediate	Top and Bottom	Trailing	Fixed
Width to Door Length	0.75" [19]	2.75" [70]	1" [25]	2.75" [70]	2.75" [70]	3" [76]	1.5" [38]	0.75" [19]
Width to Stack Depth	0.75" [19]	2.75" [70]	1" [25]	2.75" [70]	2.75" [70]	3" [76]	1.5" [38]	0.75" [19]
Min Height	2" [51]	21.25" [540]	21.25" [540]	21.25" [540]	21.625" [549]	32.125" [816]	21.25" [540]	21.25" [540]
Max Height	168" [4267]	168" [4267]	168" [4267]	168" [4267]	168" [4267]	168" [4267]	168" [4267]	168" [4267]
Top Lock Rod Travel	-	-	-	-	-	-	-	-
Bottom Lock Rod Min Travel	-	-	-	0.5" [13]	0.5" [13]	0.5" [13]	-	-
Bottom Lock Rod Max Travel Floor	-	-	-	3.5" [89]	3.5" [89]	3.5" [89]	-	-
Bottom Lock Rod Max Travel Counter	-	-	-	2.5" [64]	2.5" [64]	2.5" [64]	-	-
Lock Height Floor Application	-	47" [1194]	47" [1194]	47" [1194]	47" [1194]	47" [1194]	-	-
Lock Height Counter Application	-	17" [432]	17" [432]	17" [432]	17" [432]	17" [432]	-	-
<b>Features</b>								
Adjustable Top Hanger	-	•	•	•	•	•	•	•
Universal LH and RH	•	•	•	•	•	•	•	•
Flush Mounted Lock Rod Operation	-	-	-	•	•	•	-	-
Pull Strap	-	Std over 108" [2743]	Std over 108" [2743]	-	-	Std over 108" [2743]	-	-
Plastic Flange 7" [178] (Max 120" [3048])	-	-	-	-	-	•	Std With EL	-
Plastic Flange 4.5" [114] (Max 120" [3048])	-	-	-	-	-	•	Std With SL	-
<b>Locking Options</b>								
Cylinder/Thumb Turn	-	•	•	-	•	•	-	-
ADA Turn Knob	-	•	•	-	-	•	-	-
Locking 1 Side	-	•	•	-	•	•	-	-
Locking 2 Sides	-	•	•	-	-	•	-	-

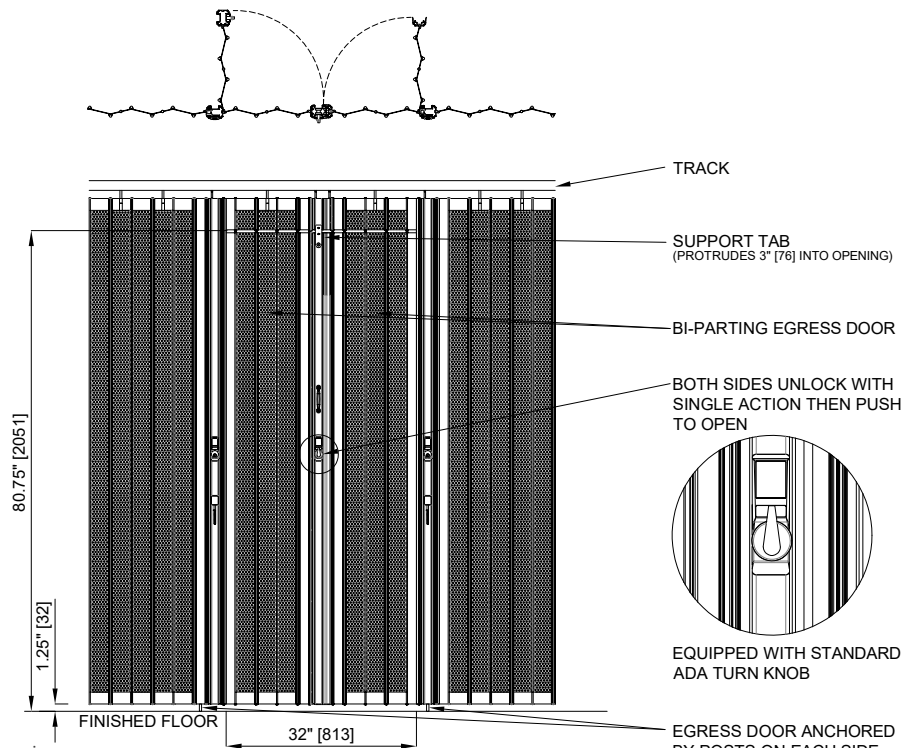
## Egress Data

Clear Opening Width (Egress Door)	32" [813]
Clear Opening Height (Egress Door)	80.75" [2051]
Min Opening Height Required	89.375" [2270]
Hand of Operation	LH/RH
Total Length (includes Bi-Part Post)	32" [813]
Stack Required (includes Bi-Part Post)	8" [203]
Perforated Aluminum or Polycarbonate**	

## Locking Options

Description	ADA Turnknob	LFIC	SFIC	StdMortise	Thumbturn
Front view					
Side view					

## Egress Details



\*\*Egress displayed in Perforated Aluminum