

4" [102] wide panel with interlocked 5" [127] polycarbonate panels and 2" [51] solid aluminum panels in a brick design. Includes Steel Pocket Frame and Aluminum Pocket Doors

Product Data

| | | |
|---------------------------|--|-----------------------|
| Max Width | Unlimited | |
| Max Height | 144" | [3658] |
| Panel Width | 4" | [102] |
| Min. Pocket Width | 5" | [127] |
| Weight Stacked | 8lbs/ft ² | 56kg/m ² |
| Weight Extended | 1.8lbs/ft ² | 11.5kg/m ² |
| Hinge Type | 1 Piece Continuous | |
| Stack Ratio | 10% of curtain width | |
| Stack Formula (Estimated) | 10% of curtain width plus 3" [76] per post | |

Color Options



Clear Anodized Standard
(In Stock)



Black Anodized
(In Stock)

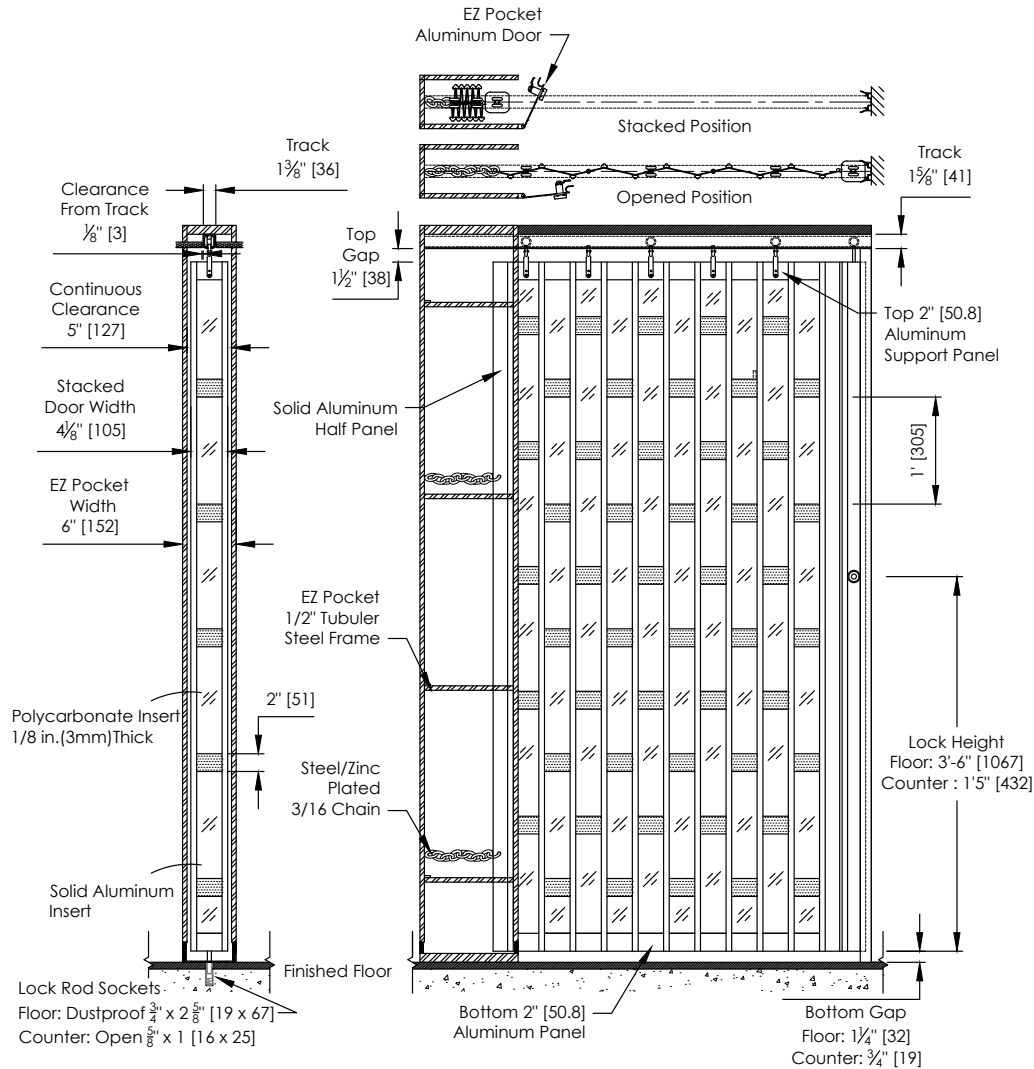


Powder Coat

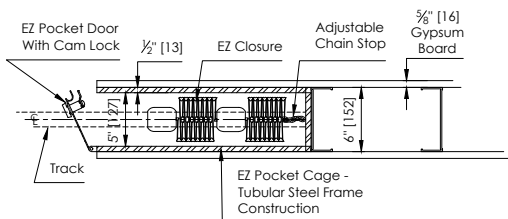
Curve Data



| | Radius 10" [254] | Radius 14" [356] |
|---------------|-----------------------------------|---------------------|
| 90 Degree | — | • |
| 120 Degree | • | — |
| 135 Degree | • | — |
| 150 Degree | • | — |
| Custom Curves | Available, please consult factory | |



EZ Straight Pocket (Typical)



Post Data



| | Post 1 | Post 2 | Post 3 | Post 3 | Post 5 | Post 7 | Post 9 | Post 10 |
|---|--------------|----------------------|----------------------|------------------|---------------|----------------------|--------------|--------------|
| Dimension | Wall Channel | Hookbolt Lead | Bi-Part Channel | Bi-Part Hookbolt | Intermediate | Top and Bottom | Trailing | Fixed |
| Width to Door Length | 0.75" [19] | 2.75" [70] | 1" [25] | 2.75" [70] | 2.75" [70] | 3" [76] | 1.5" [38] | 0.75" [19] |
| Width to Stack Depth | 0.75" [19] | 2.75" [70] | 1" [25] | 2.75" [70] | 2.75" [70] | 3" [76] | 1.5" [38] | 0.75" [19] |
| Min Height | 2" [51] | 21.25" [540] | 21.25" [540] | 21.25" [540] | 21.625" [549] | 32.125" [816] | 21.25" [540] | 21.25" [540] |
| Max Height | 168" [4267] | 168" [4267] | 168" [4267] | 168" [4267] | 168" [4267] | 168" [4267] | 168" [4267] | 168" [4267] |
| Top Lock Rod Travel | - | - | - | - | - | - | - | - |
| Bottom Lock Rod Min Travel | - | - | - | 0.5" [13] | 0.5" [13] | 0.5" [13] | - | - |
| Bottom Lock Rod Max Travel Floor | - | - | - | 3.5" [89] | 3.5" [89] | 3.5" [89] | - | - |
| Bottom Lock Rod Max Travel Counter | - | - | - | 2.5" [64] | 2.5" [64] | 2.5" [64] | - | - |
| Lock Height Floor Application | - | 47" [1194] | 47" [1194] | 47" [1194] | 47" [1194] | 47" [1194] | - | - |
| Lock Height Counter Application | - | 17" [432] | 17" [432] | 17" [432] | 17" [432] | 17" [432] | - | - |
| Features | | | | | | | | |
| Adjustable Top Hanger | - | • | • | • | • | • | • | • |
| Universal LH and RH | • | • | • | • | • | • | • | • |
| Flush Mounted Lock Rod Operation | - | - | - | • | • | • | - | - |
| Pull Strap | - | Std over 108" [2743] | Std over 108" [2743] | - | - | Std over 108" [2743] | - | - |
| Plastic Flange 7" [178] (Max 120" [3048]) | - | - | - | - | - | • | Std With EL | - |
| Plastic Flange 4.5" [114] (Max 120" [3048]) | - | - | - | - | - | • | Std With SL | - |

Egress Data

| | |
|--|----------------|
| Clear Opening Width (Egress Door) | 36" [914] |
| Clear Opening Height (Egress Door) | 80.75" [2051] |
| Min Door Opening Height Required | 89.375" [2270] |
| Hand of Operation | LH/RH |
| Total Length (includes Bi-Part Post) | 36" [914] |
| Stack Required (includes Bi-Part Post) | 8" [203] |
| Perforated Aluminum or Polycarbonate** | |

Locking Options

| Description | ADA Turnknob | LFIC | SFIC | StdMortise | Thumbturn |
|-------------|--------------|------|------|------------|-----------|
| Front view | | | | | |
| Side view | | | | | |

