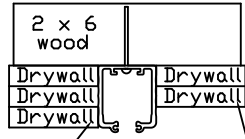
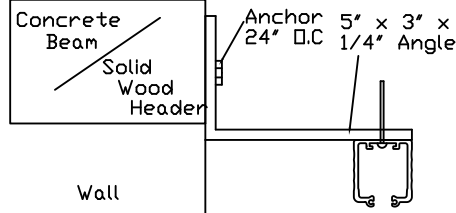


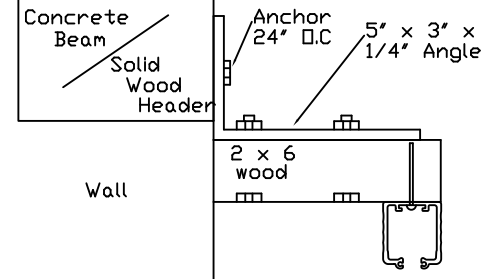
Exposed track
Into wood header



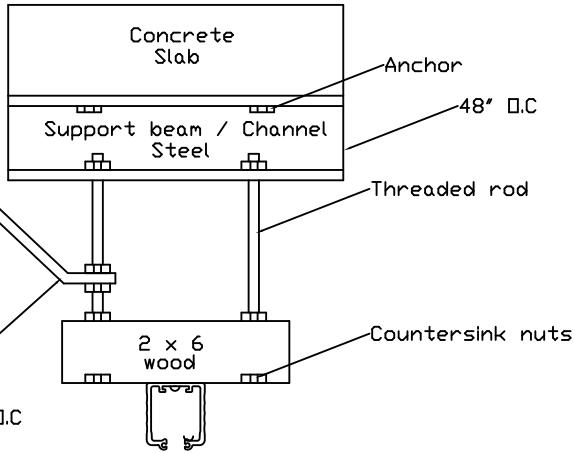
Triple Drywall
Double Drywall
Into wood header



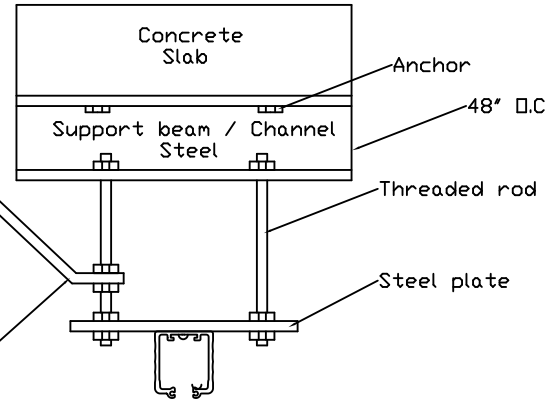
L angle mounting
Beside concrete beam or Solid wood header



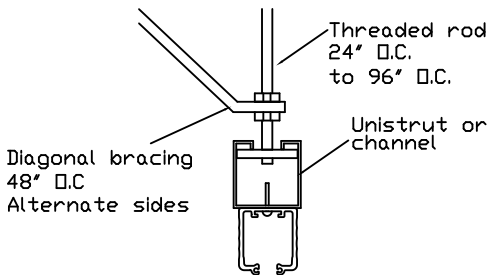
L angle mounting / Bracket mounting
Beside concrete beam with 2 x 6 blocking /
Beside solid wood header with 2 x 6 blocking



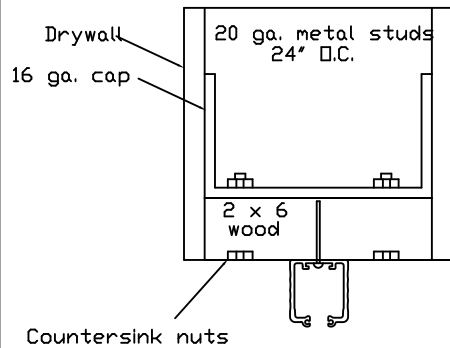
Masonry ceiling mount
suspended wood header



Masonry ceiling mount
Suspended steel header



Single threaded rod mount
Unistrut or other Channel



Metal stud mount

GENERAL NOTES:

Typical supports shown are general suggestions. Load requirements of your selected model must be engineered by others to the specified header / track support.

All structural supports, headers, pockets and framing by others. Dynamic Closures does not engineer track support. All headers are to be built to local, county or state building codes.