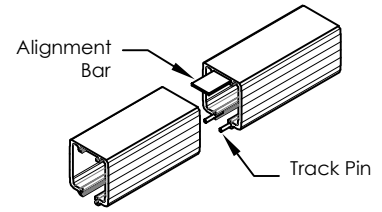
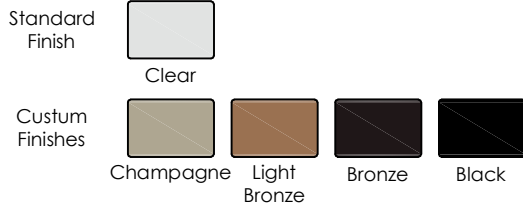
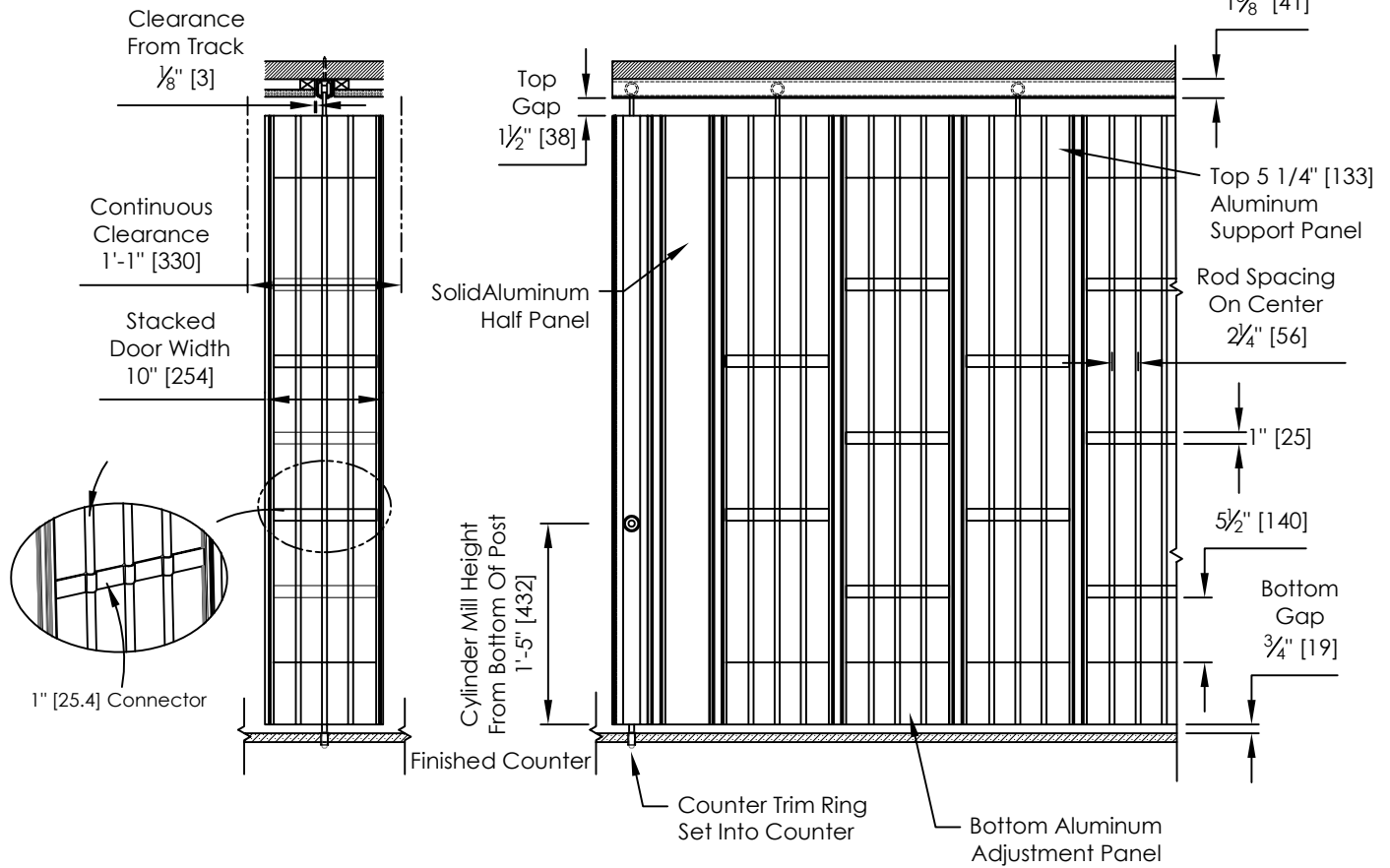
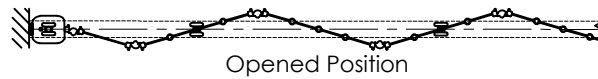
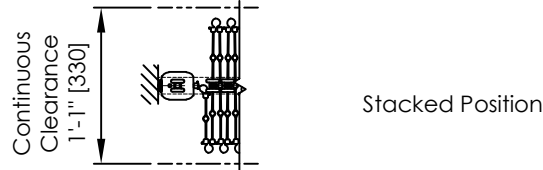


Choice Of Quality Anodized Finish On All Exposed Aluminum Parts.  
 Note: Colors May Not Be Exactly As Shown.  
 Cut And Sheared Edges Will Be Bare Aluminum.

Track – The Durable Hardened Track Allows For Smooth Operation.  
 Optional Curves And Custom Curves Available.



Ral Powder Coat and Acrylic Paint Available



DIMENSIONS ARE IN INCHES STANDARD TOLERANCES APPLY UNLESS OTHERWISE INDICATED	DRAWN: -    INITIALS: -    DATE: -									
	REVISIONS									
	<table border="1"> <thead> <tr> <th>SYM.</th> <th>DESCRIPTION</th> <th>DATE</th> <th>INITIALS</th> </tr> </thead> <tbody> <tr> <td>-</td> <td>-</td> <td>-</td> <td>-</td> </tr> </tbody> </table>	SYM.	DESCRIPTION	DATE	INITIALS	-	-	-	-	PART NO. -    PART REV. -
SYM.	DESCRIPTION	DATE	INITIALS							
-	-	-	-							
PROPRIETARY AND CONFIDENTIAL THE INFORMATION CONTAINED IN THIS DRAWING IS THE SOLE PROPERTY OF DYNAMIC CLOSURES. ANY REPRODUCTION IN PART OR AS A WHOLE WITHOUT THE WRITTEN PERMISSION OF DYNAMIC CLOSURES IS PROHIBITED.	MATERIAL - FINISH - DO NOT SCALE DRAWING	COMMENTS: -	DESCRIPTION: <b>126 Wide Body Brick (Counter Height)</b>							
		SCALE: 1:16    WEIGHT:	SHEET 1 OF 1							