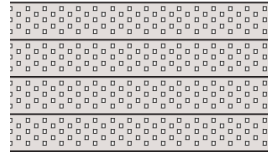


Model: P 59

**SECTION 08 33 00
COILING DOORS AND GRILLES**



This section includes editing notes to assist the user in editing the section to suit project requirements. These notes are included as hidden text, and can be revealed or hidden by one of the following methods:

Microsoft Word 2007: Click the OFFICE button, select WORD OPTIONS, select DISPLAY, then select or deselect the HIDDEN TEXT option.

Microsoft Word (earlier versions): From the pull-down menus select TOOLS, then OPTIONS. Under the tab labeled VIEW, select or deselect the HIDDEN TEXT option.

Corel WordPerfect: From the pull-down menus select VIEW, then select or deselect the HIDDEN TEXT option.

PART 1 GENERAL

1.1 SUMMARY

- A. Section Includes:
 - 1. Manual push-up [strap] [crank] [electric motor operated] overhead rolling doors.
 - 2. Operating hardware [, controls,] and supports.

- B. Related Sections:
 - 1. 05500 Metal fabrications; door jamb and header.
 - 2. 06100 Rough carpentry; door jamb and header.
 - 3. 08310 Access doors and panels.
 - 4. 08710 Door hardware; keyed mortise cylinders
 - 5. Division 16; all miscellaneous wiring for electric motors and accessories.

1.2 REFERENCES

- A. ASTM International (ASTM) B221 - Standard Specification for Aluminum and Aluminum-Alloy Extruded Bars, Rods, Wire, Profiles, and Tubes.

1.3 SUBMITTALS

- A. Submittals for Review:
 - 1. Shop Drawings: Indicate opening dimensions and required tolerances, connection details, anchorage spacing, hardware locations, and installation details.
 - 2. Product Data: Provide information on door construction, components, materials, and finishes.

- B. Sustainable Design/LEED Submittals: Documentation of recycled content and location of manufacturer.
 - 1. LEED, MR Credit 4 – Recycled Content: Provide documentation for cost of products having recycled content indicating percentages by weight of postconsumer plus 1/2 of the preconsumer content.
 - 2. LEED, MR Credit 5 – Regional Materials: Provide documentation for cost of materials or products that have been extracted, harvested, or recovered and also manufactured within 500 miles of project site.

- C. Closeout Submittals:
 - 1. Operation and Maintenance Data.

1.4 QUALITY ASSURANCE

- A. Manufacturer Qualifications: Minimum of three years experience in the fabrication and installation of Coiling Doors and Grilles.
- B. Installer Qualifications: Authorized representative of the manufacturer.

1.5 DELIVERY, STORAGE AND HANDLING

- A. Reference Section 01660 Product Storage and Handling Requirements.
- B. Deliver materials in labeled protective packages. Store and handle in compliance with manufacturer's instructions.

1.6 WARRANTIES

- A. Provide manufacturer's 2 year warranty against defects in materials and workmanship.

PART 2 PRODUCTS

2.1 MANUFACTURERS

- A. Contract Documents are based on products by Dynamic Closures Corporation. (www.dynamicclosures.com) Telephone: 1-800-663-4599; Fax: 1-800-205-6665 E-mail: CustomerService@DynamicClosures.com
- B. Equivalent products by the following manufacturers are acceptable:
 - 1. CHI Overhead Doors. (www.chiohd.com)
 - 2. Amarr Garage Doors (amarr.com)
- C. Substitutions: [Under provisions of Division 01.] [Not permitted.]

2.2 MATERIALS

- A. Aluminum Extrusions: ASTM B221, 6063-T5 or T6 alloy and temper.
- B. Recycled Content: Minimum 55 percent post industrial and minimum 10 percent post consumer.

2.3 COMPONENTS

- A. Curtain:
 - 1. Horizontal Slats: Extruded aluminum interlocking curved slats. Slat width shall be 2.32 inches (59 mm) high. Slats are perforated with 3/16 square holes 5/8 o.c. horizontal and 7/16 o.c. diagonal.
- B. Bottom Bar: Double-walled extruded aluminum with polypropylene felt weather-stripping on bottom to seal for light and sound.
- C. Hood and Fascia: 18 gauge (.040) thickness preformed sheet aluminum.
- D. Guides: : Extruded aluminum 2-3/8 inch (59mm) by 1-1/8 inch (29mm) fitted with two rows of polypropylene felt weather stripping for quiet operation and to cushion both sides of curtain.

- E. Counterbalance: Helical torsion spring assembly set in roll formed galvanized steel pipe of recommended size by manufacturer to support curtain with a maximum deflection of .03 inch (.8mm) per foot (305mm) of curtain width.
- F. Bracket Plates: Minimum 3/16 inch (5mm) thick die cast aluminum to support counterbalance assembly, curtain and hood.
- G. Operation:
 - 1. Manual push-up.
Or
 - 2. Hand crank from coil side of curtain.
Or
 - 3. Strap operation from secure side of curtain.
Or
 - 4. Electric Motor: Tubular motor, size recommended by manufacturer.
 - a. Keyed control stations: Constant contact operation, flush mounted one or both sides of curtain for secure operation.
- H. Lock: Located on bottom bar; [slide locks on secured side of curtain.] [Keyed cylinder centered [interior] [exterior]].
- I. Finish-Exposed Aluminum Parts: Clear anodized

PART 3 EXECUTION

3.1 INSTALLATION

- A. Install door assembly in accordance with manufacturer's instructions.
- B. Follow approved shop drawings.
- C. Fit and align grille assembly including hardware, level and plumb, to provide smooth operation.

3.2 ADJUSTING/MAINTENANCE

- A. Test Operation of door and adjust to provide smooth and proper operation.
- B. Clean exposed surfaces using manufacturers recommended cleanser.

END OF SECTION