

**E2 CLOSURE**

# Storefront Security is E2



**E2 VENT**



SOLID ALUMINUM  
**E2 GUARD**



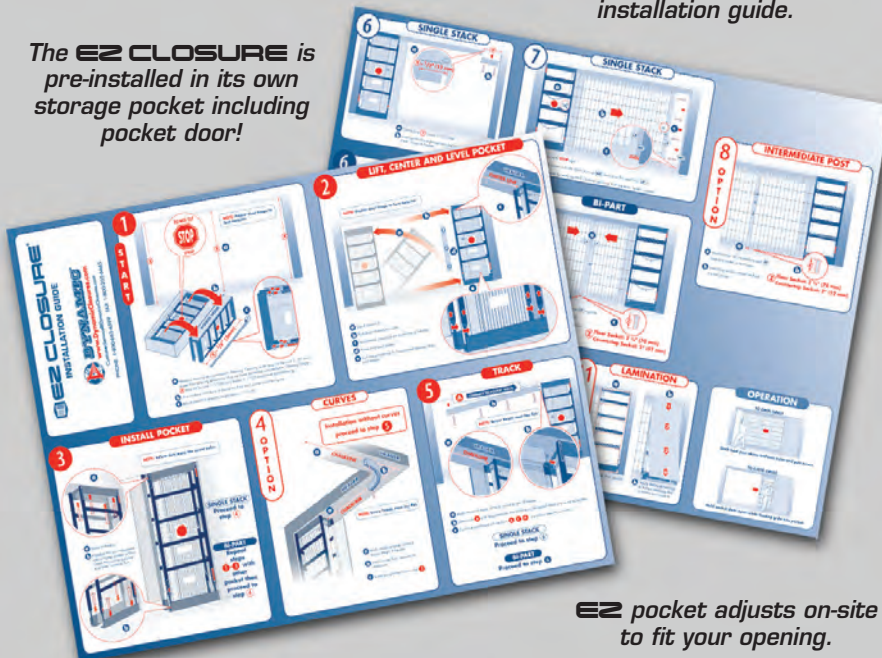
OPEN-AIR  
**E2 GRILLE**



PERFORATED ALUMINUM  
**E2 VENT**

The **E2 CLOSURE** is labeled with instructions and comes with an **E2** to follow installation guide.

The **E2 CLOSURE** is pre-installed in its own storage pocket including pocket door!



**E2** pocket adjusts on-site to fit your opening.

Installs within footprint of six inch stud wall - no additional pocket space required!

So simple to install, anyone can do it in an hour!

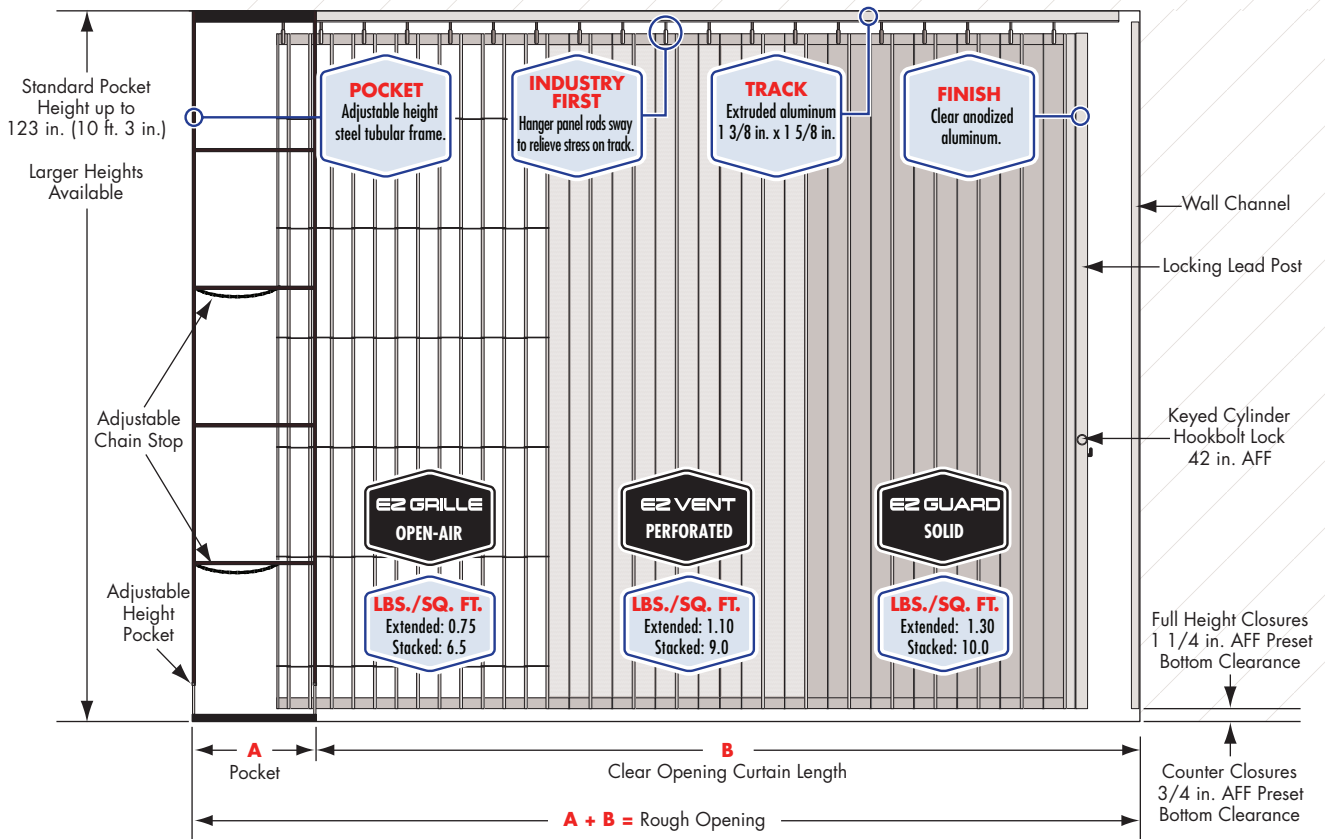
Two year Limited Warranty!



**DYNAMIC**  
www.DynamicClosures.com

PHONE: 1-800-663-4599 FAX: 1-800-205-6665

**STANDARD FEATURES**



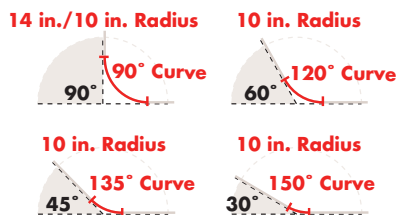
**STANDARD STRAIGHT LAYOUT POCKET DIMENSIONS**

Rough Opening Width	
A	B
Pocket	Clear Opening Curtain Length
11 in.	up to 60 in. (5 ft. 0 in.)
15 1/2 in.	up to 102 (8 ft. 6 in.)
20 in.	up to 120 in. (10 ft. 0 in.)
25 in.	up to 162 in. (13 ft. 6 in.)
31 in.	up to 222 in. (18 ft. 6 in.)
36 in.	up to 240 in. (20 ft. 0 in.)
42 in.	up to 294 in. (24 ft. 6 in.)
48 in.	up to 354 in. (29 ft. 6 in.)

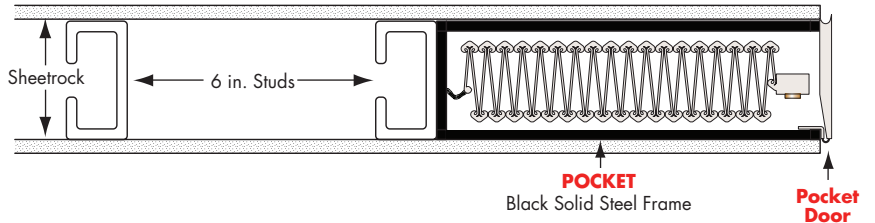
Consult factory for layouts with curves.  
Larger widths accommodated with custom pockets.

**OPTIONAL FEATURES**

- Interior thumb turn in lieu of keyed cylinder. Protection panels required on EZ Grille.
- Top and bottom locking lead post.
- Bi-parting closure (dual pockets).
- Factory supplied laminate pocket covering.
- Standard curves and custom radius curves available.



**POCKET DETAIL IN 6 INCH STUD WALL**



**EMERGENCY EGRESS DOOR**

- The EZ Closure Egress door is available on clear opening heights greater or equal to 7'6 in..
- The finished clear opening of egress measures 32 in. wide, and 78 3/4 in. high.
- EZ Grille Emergency Egress Doors will be supplied with perforated aluminum panels with rod protection to the left and right as required.

