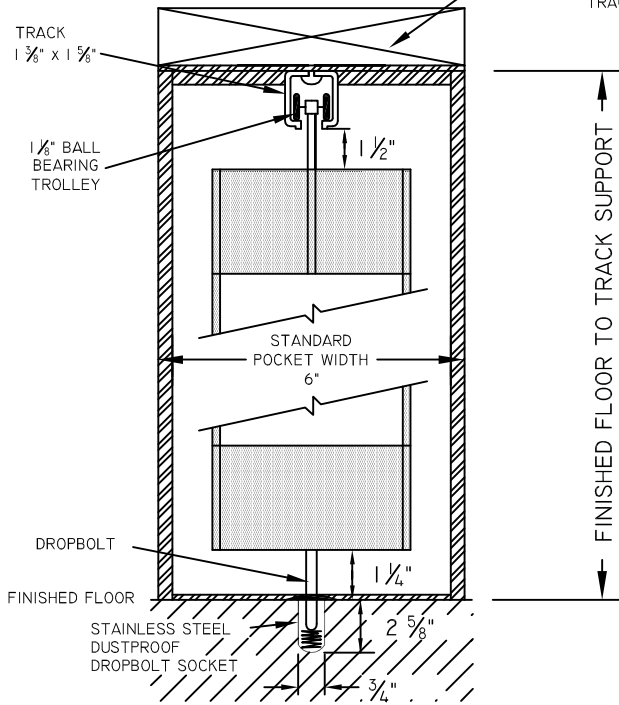




NOTE: DRAWING IS NOT TO SCALE

\*CONTINUOUS STRUCTURAL  
HEADER SUPPORT FOR THE  
TRACK AND EZ POCKET BY OTHERS



VERTICAL SECTION

**EZ-Vent**

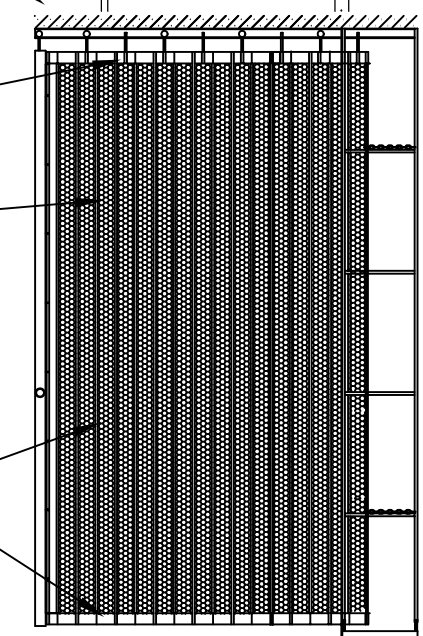
LOAD REQUIREMENTS LBS/SQ. FT  
STACKED EXTENDED

2" aluminum panel as top transom

Perforated panels  
3/16" Diameter Holes  
18 Holes PSI, 50% Visibility

Closure built with continuous aluminum hinges: 3 1/2" on center

2" aluminum panel as bottom transom



STANDARD STRAIGHT LAYOUT

POCKET DIMENSIONS

A + B		
Rough Opening Width		
A	B	
Pocket	Clear Opening	Curtain Length
11 in.	up to 60 in. (5 ft. 0 in.)	
15 1/2 in.	up to 98 in. (8 ft. 2 in.)	
20 in.	up to 144 in. (12 ft. 0 in.)	
25 in.	up to 174 in. (14 ft. 6 in.)	
31 in.	up to 228 in. (19 ft. 0 in.)	
36 in.	up to 270 in. (22 ft. 6 in.)	

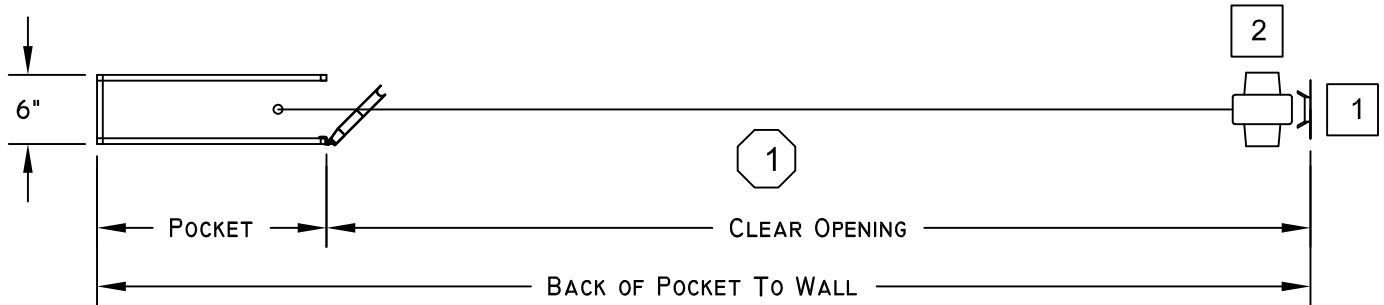
Consult factory for layouts with curves.

Layouts will be accommodated with custom pockets.

-POCKET DOOR BY DYNAMIC

# POST NUMBER  
# SECTION NUMBER

Interior



"General Contractor will provide wall with sufficient blocking to secure the wall channel in place"

Date:	Customer:	Project:	Location:
Revised:	Clear Opening Width:	Clear Opening Height:	Finish: Clear Anodized
			P.O. No.:

Approved: _____ Signature	_____ Date	Quote No.:
------------------------------	------------	------------