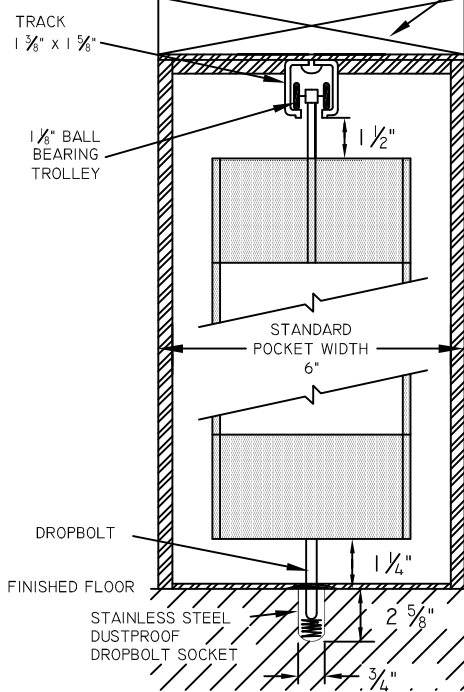




NOTE: DRAWING IS NOT TO SCALE

*CONTINUOUS STRUCTURAL
HEADER SUPPORT FOR THE
TRACK AND EZ POCKET BY OTHERS

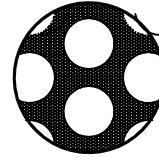


VERTICAL SECTION

EZ-Vent

LOAD REQUIREMENTS LBS/SQ. FT
STACKED EXTENDED

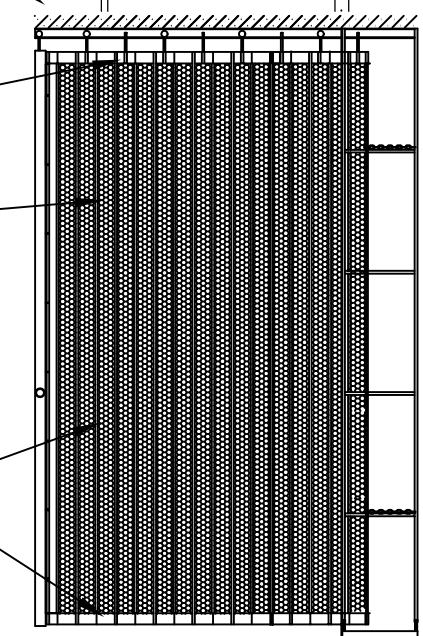
2" aluminum panel
as top transom



Perforated panels
3/16" Diameter Holes
18 Holes PSI, 50% Visibility

Closure built with continuous
aluminum hinges: 3 1/2" on center

2" aluminum panel
as bottom transom



**STANDARD STRAIGHT LAYOUT
POCKET DIMENSIONS**

A + B Rough Opening Width		
A Pocket	B Clear Opening	Curtain Length
11 in.	up to 60 in. (5 ft. 0 in.)	
15 1/2 in.	up to 98 in. (8 ft. 2 in.)	
20 in.	up to 144 in. (12 ft. 0 in.)	
25 in.	up to 174 in. (14 ft. 6 in.)	
31 in.	up to 228 in. (19 ft. 0 in.)	
36 in.	up to 270 in. (22 ft. 6 in.)	

Consult factory for options with curves.
Larger widths accommodate double custom pockets.

POST NUMBER

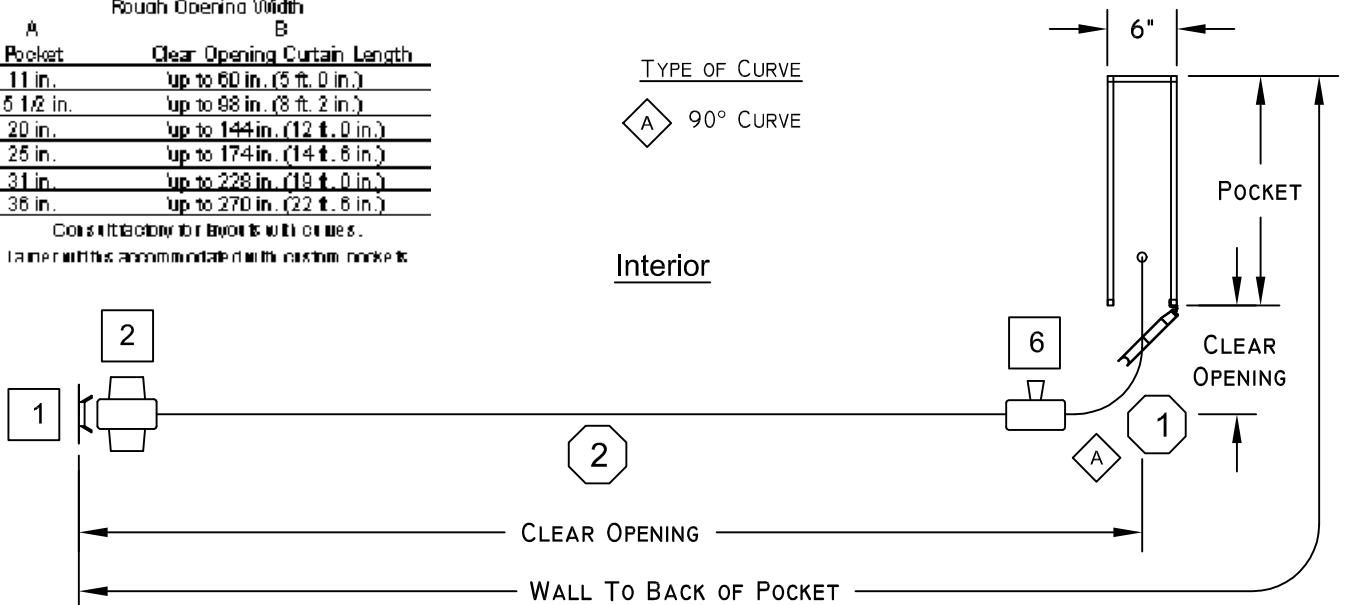
SECTION NUMBER

-POCKET DOOR BY DYNAMIC

TYPE OF CURVE

◇ 90° CURVE

Interior



Date:	Customer:	Project:	Location:
Revised:	Clear Opening Width:	Clear Opening Height:	Finish: Clear Anodized P.O. No.:

Approved: _____ Signature _____ Date _____ Quote No.: _____