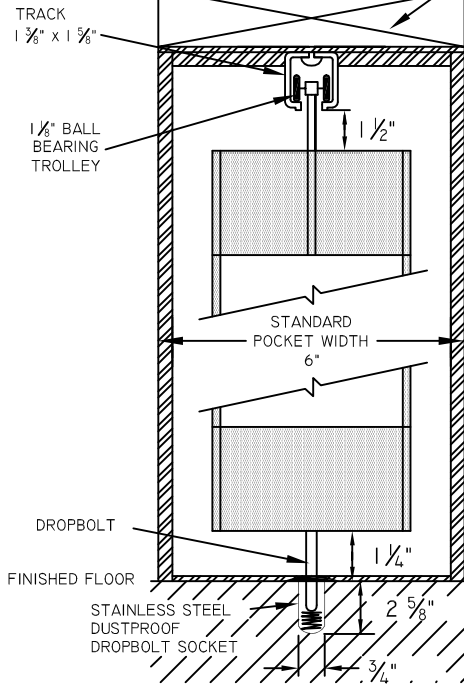




NOTE: DRAWING IS NOT TO SCALE

\*CONTINUOUS STRUCTURAL  
HEADER SUPPORT FOR THE  
TRACK AND EZ POCKET BY OTHERS



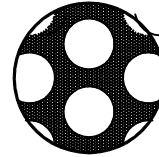
VERTICAL SECTION

FINISHED FLOOR TO TRACK SUPPORT

**EZ-Vent**

LOAD REQUIREMENTS LBS/SQ. FT  
STACKED                      EXTENDED

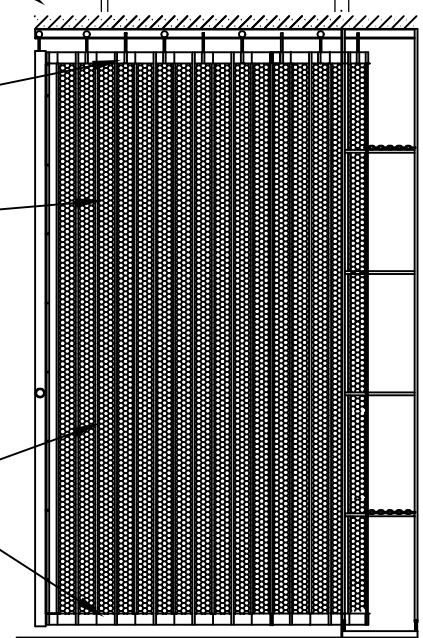
2" aluminum panel  
as top transom



Perforated panels  
3/16" Diameter Holes  
18 Holes PSI, 50% Visibility

Closure built with continuous  
aluminum hinges: 3 1/2" on center

2" aluminum panel  
as bottom transom



STANDARD STRAIGHT LAYOUT

POCKET DIMENSIONS

A + B

Rough Opening Width

| A          | B | Clear Opening                | Curtain Length |
|------------|---|------------------------------|----------------|
| 11 in.     |   | up to 60 in. (5 ft. 0 in.)   |                |
| 15 1/2 in. |   | up to 98 in. (8 ft. 2 in.)   |                |
| 20 in.     |   | up to 144 in. (12 ft. 0 in.) |                |
| 25 in.     |   | up to 174 in. (14 ft. 6 in.) |                |
| 31 in.     |   | up to 228 in. (19 ft. 0 in.) |                |
| 36 in.     |   | up to 270 in. (22 ft. 6 in.) |                |

Consult factory for layouts with curves.

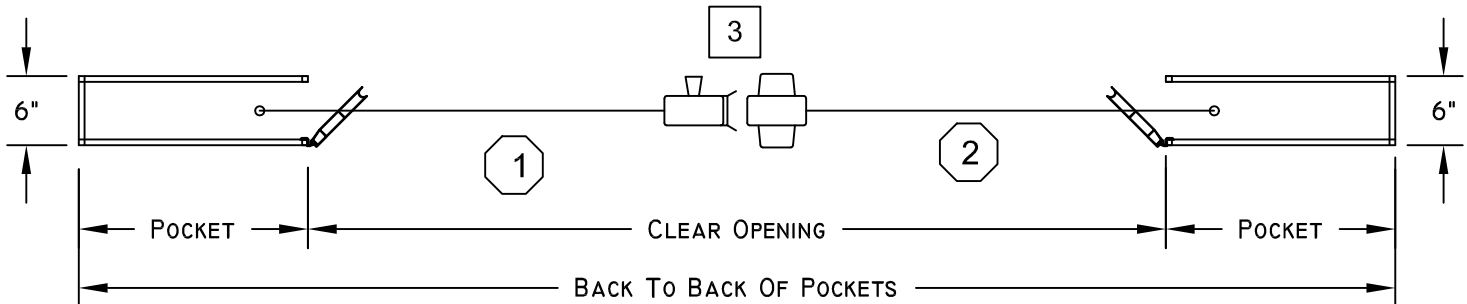
Layout will be accommodated with custom pockets.

-POCKET DOORS BY DYNAMIC

# POST NUMBER

# SECTION NUMBER

Interior



|           |                      |                       |            |
|-----------|----------------------|-----------------------|------------|
| Date:     | Customer:            | Project:              | Location:  |
| Revised:  | Clear Opening Width: | Clear Opening Height: | P.O. No.:  |
| Approved: | Signature            |                       | Quote No.: |
|           | Date                 |                       |            |