

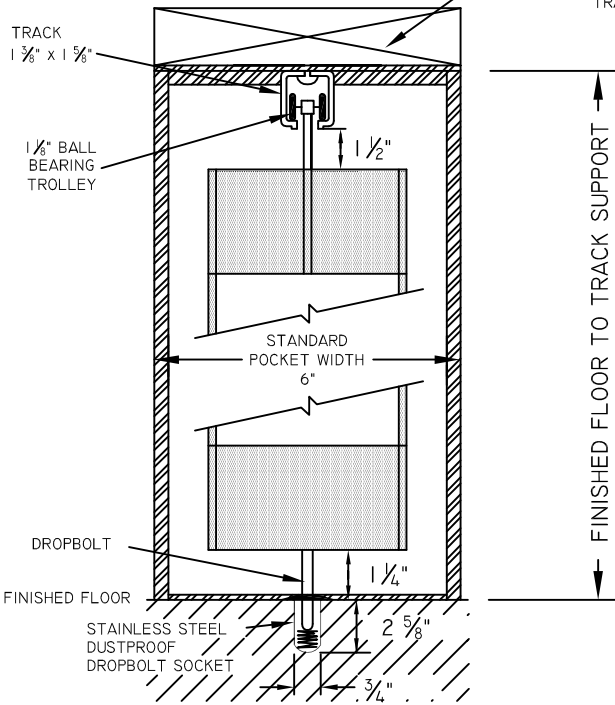


NOTE: DRAWING IS NOT TO SCALE

*CONTINUOUS STRUCTURAL
HEADER SUPPORT FOR THE
TRACK AND EZ POCKET BY OTHERS

EZ-GUARD

LOAD REQUIREMENTS LBS./SQ. FT
STACKED 15
EXTENDED 1.4



VERTICAL SECTION

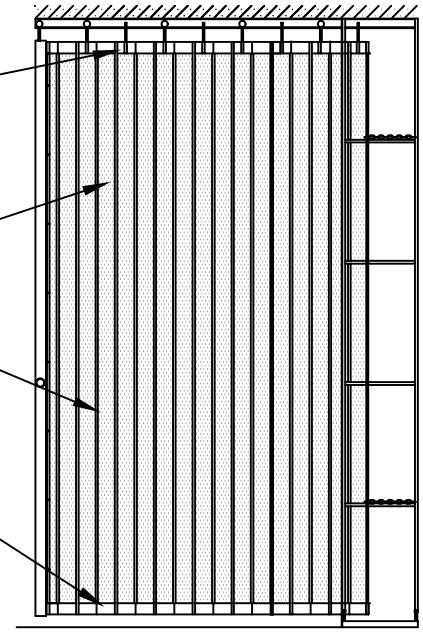
FINISHED FLOOR TO TRACK SUPPORT

2" aluminum panel as top transom

Solid aluminum panels

Closure built with continuous aluminum hinges: 3 1/2" on center

2" aluminum panel as bottom transom



**STANDARD STRAIGHT LAYOUT
POCKET DIMENSIONS**

A + B Rough Opening Width		
A Pocket	B Clear Opening	Curtain Length
11 in.	up to 60 in. (5 ft. 0 in.)	
15 1/2 in.	up to 98 in. (8 ft. 2 in.)	
20 in.	up to 144 in. (12 ft. 0 in.)	
25 in.	up to 174 in. (14 ft. 6 in.)	
31 in.	up to 228 in. (19 ft. 0 in.)	
36 in.	up to 270 in. (22 ft. 6 in.)	

Consult factory for layouts with curves.
Larger widths accommodate double custom pockets.

POST NUMBER

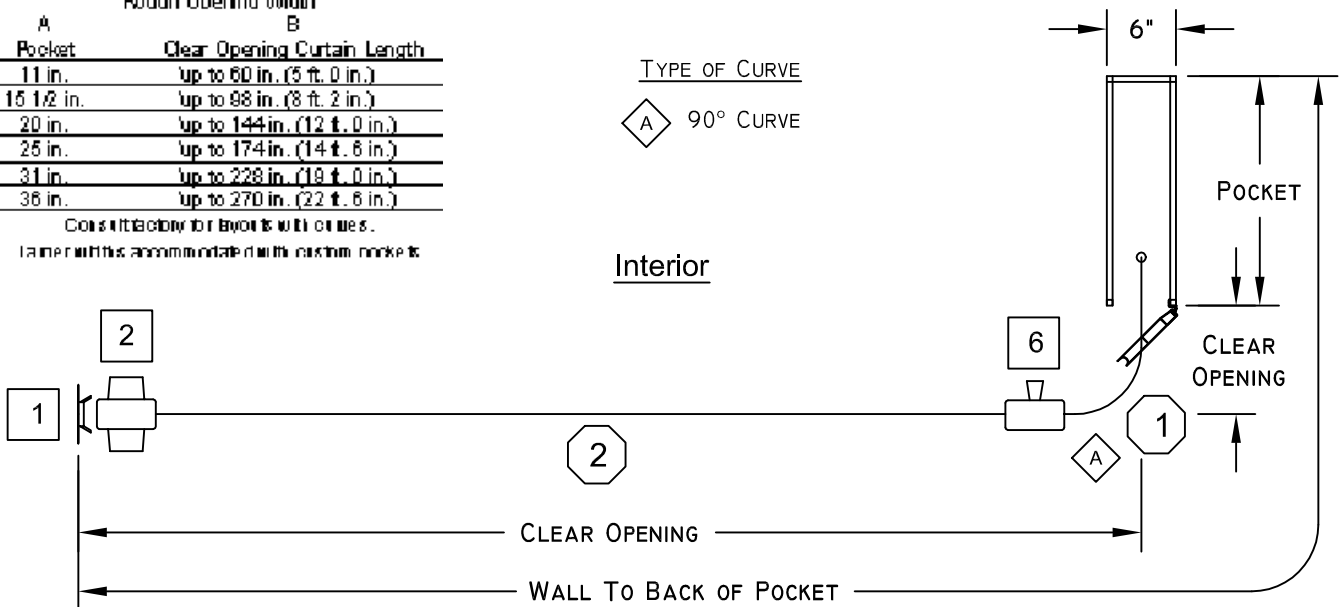
SECTION NUMBER

-POCKET DOOR BY DYNAMIC

TYPE OF CURVE

A 90° CURVE

Interior



Date:	Customer:	Project:	Location:
Revised:	Clear Opening Width:	Clear Opening Height:	Finish: Clear Anodized
			P.O. No.:

Approved:	Quote No.:
Signature	Date