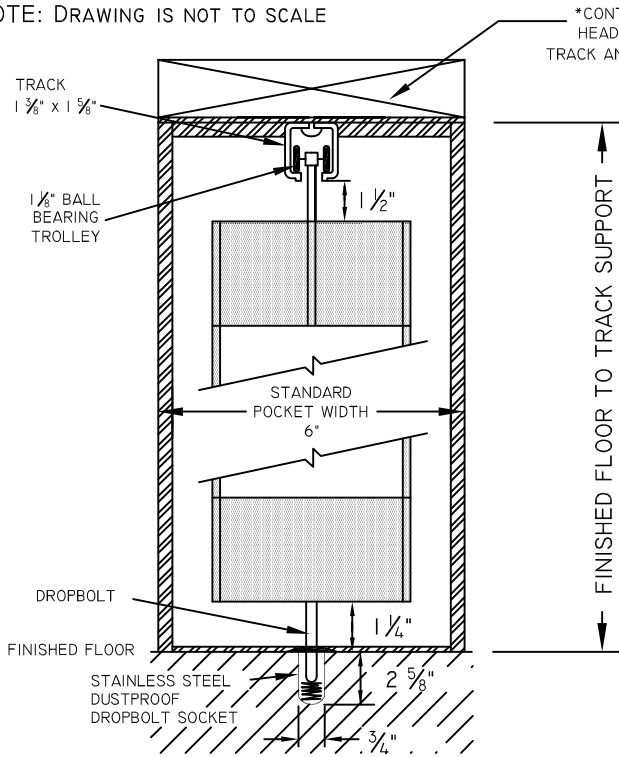




NOTE: DRAWING IS NOT TO SCALE



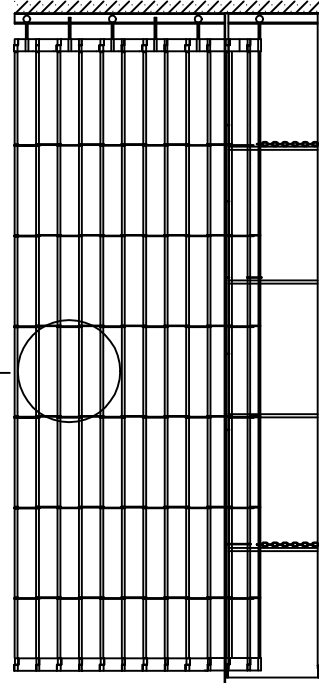
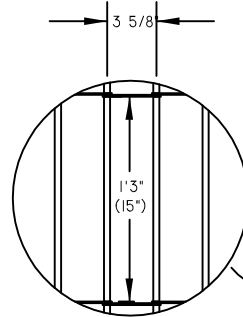
VERTICAL SECTION

*CONTINUOUS STRUCTURAL
HEADER SUPPORT FOR THE
TRACK AND EZ POCKET BY OTHERS

FINISHED FLOOR TO TRACK SUPPORT

EZ-GRILLE

LOAD REQUIREMENTS LBS/SQ. FT
STACKED 8 EXTENDED .75



EZ POCKET WITH
1/2" TUBULAR STEEL
CONSTRUCTION

**STANDARD STRAIGHT LAYOUT
POCKET DIMENSIONS**

A + B Rough Opening Width		
A Pocket	B Clear Opening	Curtain Length
11 in.	up to 60 in. (5 ft. 0 in.)	
15 1/2 in.	up to 98 in. (8 ft. 2 in.)	
20 in.	up to 144 in. (12 ft. 0 in.)	
25 in.	up to 174 in. (14 ft. 6 in.)	
31 in.	up to 228 in. (19 ft. 0 in.)	
36 in.	up to 270 in. (22 ft. 6 in.)	

Consult factory for brackets with curves.

Frames with this accommodate with custom pockets

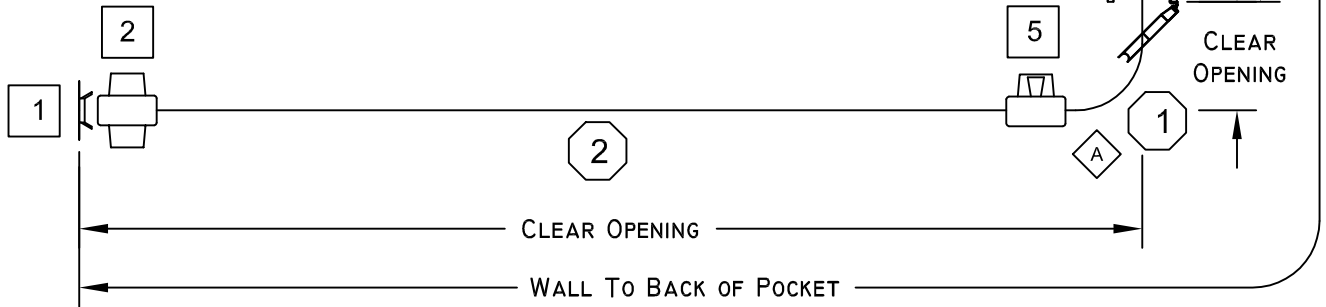
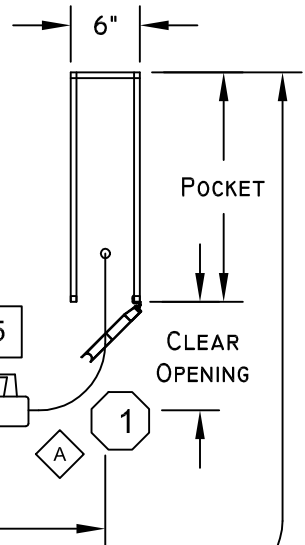
- # POST NUMBER
- # SECTION NUMBER

-POCKET DOOR BY DYNAMIC

TYPE OF CURVE

- ◊ 90° CURVE

Interior



Date:	Customer:	Project:	Location:
Revised:	Clear Opening Width:	Clear Opening Height:	Finish: Clear Anodized
Approved: _____ Signature			Quote No.: _____
Date: _____			