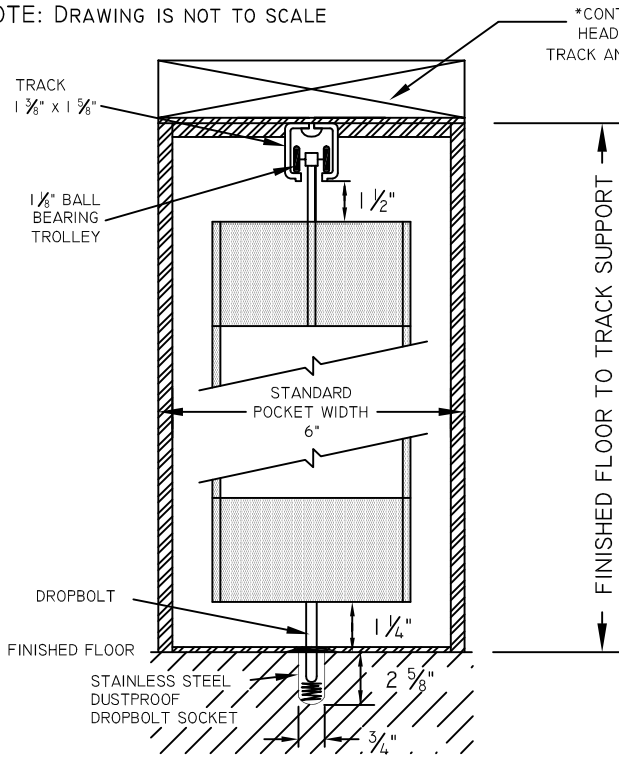




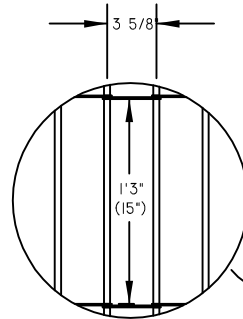
NOTE: DRAWING IS NOT TO SCALE



VERTICAL SECTION

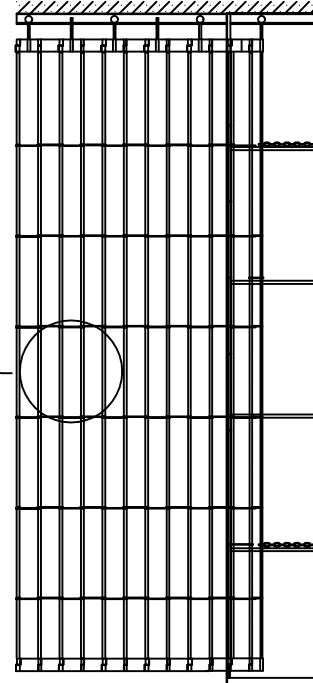
*CONTINUOUS STRUCTURAL
HEADER SUPPORT FOR THE
TRACK AND EZ POCKET BY OTHERS

FINISHED FLOOR TO TRACK SUPPORT



EZ-GRILLE

LOAD REQUIREMENTS LBS/SQ. FT
STACKED 8 EXTENDED .75



EZ POCKET WITH
1/2" TUBULAR STEEL
CONSTRUCTION

STANDARD STRAIGHT LAYOUT

POCKET DIMENSIONS

A + B

Rough Opening Width

A

B

Pocket	Clear Opening	Curtain Length
11 in.	up to 60 in. (5 ft. 0 in.)	
15 1/2 in.	up to 98 in. (8 ft. 2 in.)	
20 in.	up to 144 in. (12 ft. 0 in.)	
25 in.	up to 174 in. (14 ft. 6 in.)	
31 in.	up to 228 in. (19 ft. 0 in.)	
36 in.	up to 270 in. (22 ft. 6 in.)	

Consult factory for layouts with curves.

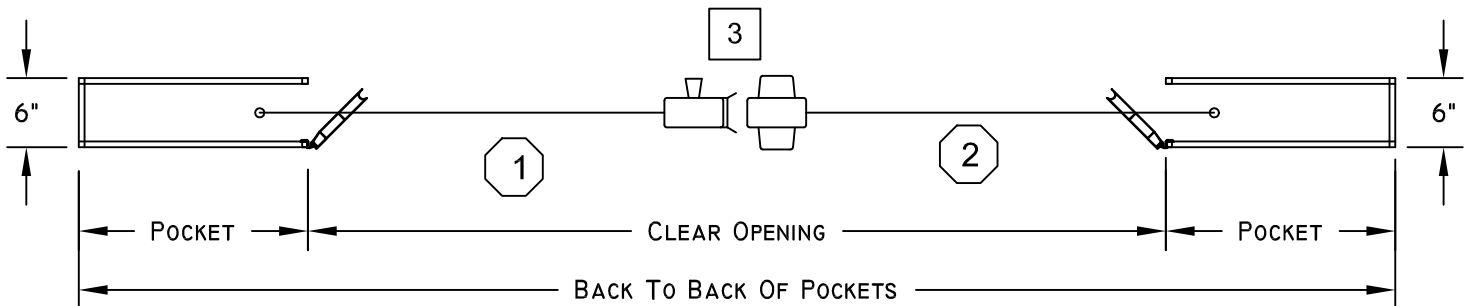
Layout widths accommodate double custom pockets.

-POCKET DOORS BY DYNAMIC

POST NUMBER

SECTION NUMBER

Interior



Date:	Customer:	Project:	Location:
Revised:	Clear Opening Width:	Clear Opening Height:	Finish: Clear Anodized P.O. No.:

Approved:

Signature

Date

Quote No.: